

RECYCLING

DO NOT BAG RECYCLABLES. PLACE LOOSE IN CART.

Clean paper & cardboard



Metal



Glass bottles and jars

No caps or lids



Plastic bottles, jugs & tubs

No caps or lids



Extra Recycling:

Put extra recycling in cardboard boxes (limit 3'x3'x3'), or a 35-gallon can with handles marked "recycling".

NO LOOSE PLASTIC BAGS AND NO BAGGED RECYCLABLES.



Recycling Tips:

1. Ignore the number on plastic containers, instead recycle only plastics in the shape of a bottle, jug or tub.
2. Empty, clean, and loose. These three words can greatly improve the quality of recyclables placed in your cart. You can do this by rinsing out recyclables and placing empty containers directly in your cart loose.

KEEP OUT OF RECYCLING EXAMPLES

- | | | |
|--|-----------------------------|---|
| Plastic Bags (recycle at grocery stores) | Diapers | Aluminum Foil |
| Foam Cups & Packaging | Fuel Tanks and Engine Parts | Cords and Hoses |
| Hazardous Waste | Computers or TVs | Broken Dishes, Ceramics or Window Glass |
| Medical Waste | Liquids | Paper Cups and Milk Cartons |
| Syringes | Shredded Paper | Cell Phones |
| Batteries | | |

YARD & FOOD DEBRIS

OPTIONAL SERVICE.

Food scraps and leftovers

No produce stickers



Food-soiled paper



Plants, flowers and yard trimmings

Branches must be no larger than 4 inches in diameter and cut into 4 foot or smaller sections.



Extra Yard and Food Debris:

There is a charge for extra yard debris that doesn't fit in your container with the lid closed.

Place extras in:

- Cans with handles (35 gal., 70 lb. limit) labeled "yard"
- Bundle tied with compostable twine (4'x2' limit)
- Kraft Paper bags labeled "yard"
- An extra cart (available for an extra charge)

NO PLASTIC BAGS



Yard and Food Debris Collection Tips:

1. Collect kitchen food scraps in:
 - Colander or strainer
 - Paper grocery bag
 - Resuable plastic, metal or ceramic containers with a lid
2. Empty your container into yard & food debris cart frequently.
3. Layer food scraps with yard debris or newspaper to absorb liquids.

KEEP OUT OF YARD AND FOOD DEBRIS EXAMPLES

- | | | |
|--------------------------------|--------------|---------------------|
| Plastic Bags & Containers | Liquids | Diapers & Pet Waste |
| Compostable Serviceware & Bags | Glass | Garden Hoses |
| Bulk Fats, Oil or Grease | Metal & Foil | Dirt, Sod & Rocks |
| Cell Phones | | |

GARBAGE

PLEASE BAG ALL GARBAGE AND PLACE IN YOUR CART.

Non-recyclable plastic



Non-recyclable glass



Non-recyclable paper



Non-recyclable metal

Paint cans, lids, caps, sharp metal objects, plastic appliances, etc.



TIP:

Paint is accepted at the Spokane Valley Transfer Station

Extra Garbage:

Garbage charges are based on container size. There is a extra charge when the material amount causes the cart lid to be raised more than 6 inches.

Annual Curbside Cleanup:

Visit wmnorthwest.com/spokanevalley to schedule bulk waste collection service once per year at no additional cost. Additional bulky waste collections are available for a fee.



Garbage Tips:

1. Please use WM provided cart
2. Bag all garbage
3. Double bag pet waste, packing pellets, vacuum dust, sawdust, and cold ashes
4. Weight limit: 70 lbs/35-gal cart

KEEP OUT OF GARBAGE EXAMPLES

- | | | |
|-----------------|----------------------------|--------------------------|
| Hazardous Waste | Flourescent Bulbs or Tubes | Computers or Televisions |
| Medical Waste | Liquids | Hot Coals/Ash |
| Syringes | Fuel Tanks | Food and Yard Debris |

Service Information

CONTAINER SET OUT GUIDELINES

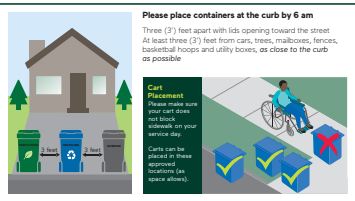
Please place containers at the curb by 6 am

Three (3') feet apart with lids opening toward the street
At least three (3') feet from cars, trees, mailboxes, fences, basketball hoops and utility boxes, as close to the curb as possible

Cart Placement

Please make sure your cart does not block sidewalk on your service day.

Carts can be placed in these approved locations (as space allows).



DO MORE WITH MY WM

WM is committed to finding ways to make your service more efficient, effective and effortless to manage. Please create your My WM profile by visiting wm.com.

Easily view your collection schedule and stay informed of Service Alerts and schedule changes.

Receive real-time notifications and view images so you are always in the know

Manage your billing by viewing payment history, changing your payment method or enrolling in AutoPay and Paperless billing

Download the My WM mobile app to have your service and account information at your fingertips.



SERVICE DELAYS

WM is able to provide service in most weather conditions. In an event of extreme inclement weather event, visit servicealerts.wmnorthwest.com/spokanevalley to learn about any service delays.

If weather conditions prevent safe collection, up to twice as much garbage, recyclables and yard debris will be collected at no extra charge on your next regular collection day. No credits will be issued for weather-caused collection delays. Instructions for setting out extras can be found at: servicealerts.wmnorthwest.com/spokanevalley

Think Outside The Cart

REDUCE AND REUSE BEFORE YOU RECYCLE.

Waste prevention is our biggest opportunity to reduce the consumption of natural resources.



PREVENT FOOD WASTE – BUY ONLY WHAT YOU NEED

When grocery shopping, be thoughtful. Make a list and buy only what you need to minimize any food waste. Visit wmnorthwest.com for more food waste reduction tips.



BUY NOTHING

Instead of buying items you will use infrequently, consider borrowing or renting. Borrow from a neighbor or social media site.



SHARE, SWAP OR SELL

Sell items you no longer want and find bargains at consignment shops, garage sales, bargains at consignment shops, garage sales, thrift stores, online exchanges and auctions.



CHOOSE TO REUSE

Use reusable mugs, water bottles, utensils and bags. Store these in your car or at your desk so you will always be prepared.



REPAIR

Keep items in circulation longer through reuse. Try repairing at item to extend its life by asking a neighbor for help or visiting a Repair Café.

Resources Beyond the Curb

Visit www.spokanewastedirectory.org or www.spokanevalley.org/solidwaste for detailed information about what materials are accepted

Computers, Monitors & TV Recycling

- E-Cycle Washington, www.ecyclewashington.org

Fluorescent Bulbs & Tubes, Cell Phones and Batteries

- WM, www.thinkgreenfromhome.com
- Visit www.lightrecycle.org/ for drop off locations

Unwanted Medicines

- Take Back Your Meds, www.takebackyourmeds.org

Sharps Disposal

- WM, www.thinkgreenfromhome.com
- Spokane Valley University Transfer Station

HOUSEHOLD HAZARDOUS WASTE

Hazardous products that say "Caution, Warning, Danger or Poison" on the label are harmful to humans, wildlife and the environment and are not allowed in the garbage.

For proper disposal information, please visit:

Hazardous Waste Drop-off

- Spokane Valley University Transfer Station – 2405 University Road, 509-924-5678

PRESENT STD.
U.S. POSTAGE
PAID
TACOMA, WA
PERMIT NO. 972



11321 E. Indiana Road
Spokane Valley, WA 99206-5133
1477-466-4668



Visit us on
Facebook
Think Green WM Spokane Valley



NEW! Collection
Schedule + Guide!

Please save and post.



Spokane Valley

Service Guide

2024-2025



#487_SPokaneValley_EVEN_2024_25