

CURBSIDE RECYCLING GUIDE

Empty, rinse and place these loose items in your recycling cart. Only recycle the items listed.



Plastic Bottles, Jugs & Tubs



Paper



Food & Beverage Cans



Flattened Cardboard & Paperboard



Glass Bottles & Containers

Extra Recycling: There is an additional charge for each extra bag or container (35-gallon, 70 lb. limit) that doesn't fit in your container with the lid closed. Please see the website for additional fees based on commodity.

GARBAGE GUIDE

Charges are based on container size.

Place all carts on the road at least two feet apart and three feet from cars, trees and other objects.

(Rates: wmnorthwest.com/lakestevens)

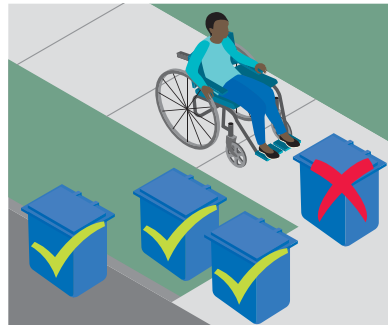
Please bag all garbage.

Visit wmnorthwest.com/lakestevens

or call 1-800-592-9995

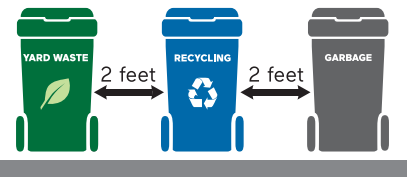
M-F 7am-7pm, Sat 9am-1pm for:

- Missed Collection or damaged carts
- Collected rates or service subscription
- Disabled veteran discount and disabled service
- Construction/demolition containers (remodeling, etc)



Cart Placement Please make sure your cart does not block the sidewalk on service day.

Carts can be placed in these three approved locations (as space allows).



YARD + FOOD WASTE GUIDE

All of these materials can go in your green yard and food waste cart.



Food Scraps



Yard Trimmings

Yard and food waste collection is available by subscription. Call 1-800-592-9995 to sign up.



Food-Soiled Paper

KEEP OUT of Your Yard + Food Waste

- ✘ Plastic Bags
- ✘ Glass or Metal
- ✘ Service Ware Advertised as "Compostable" or "Biodegradable"
- ✘ Liquids, Fat, Oil or Grease
- ✘ Pet Waste

Yard + Food Waste Tips

- Use a collection method that works for you – reusable container with a lid, paper grocery bag, compostable bag.
- Empty your container into yard and food cart frequently.
- Layer food scraps with yard waste and newspaper to absorb liquids.
- Not all bags labeled "compostable" actually break down at our local facility.

RESOURCES

Snohomish County Solid Waste
425-388-3425

1-800-RECYCLE (732-9253)
1800recycle.wa.gov/
Online information to help you dispose of materials properly.

Household Hazardous Waste
www.snoco.org



INCLEMENT WEATHER GUIDE

If weather conditions prevent safe collection, up to twice as much material will be collected at no extra charge on your next regular collection day for each container not emptied. No credit for collection delayed due to weather.

Updates: servicealerts.wmnorthwest.com/lakestevens/

DO MORE WITH MY WM

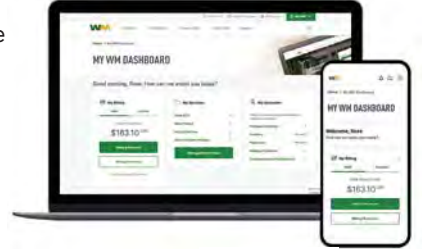
WM is committed to finding ways to make your service more efficient, effective and effortless to manage. Please access your My WM profile by visiting wm.com.

Easily view your collection schedule and stay informed of Service Alerts and schedule changes.

Receive real-time notifications and view images so you are always in the know.

Manage your billing by viewing payment history, changing your payment method or enrolling in AutoPay and Paperless billing.

Download the My WM mobile app to have your service and account information at your fingertips.



THINK OUTSIDE THE CART

REDUCE AND REUSE BEFORE YOU RECYCLE. Waste prevention is our biggest opportunity to reduce the consumption of natural resources.



PREVENT FOOD WASTE – BUY ONLY WHAT YOU NEED

When grocery shopping, be thoughtful. Make a list and buy only what you need to minimize any food waste. Visit wmnorthwest.com for more food waste reduction tips.



BUY NOTHING

Instead of buying items you will use infrequently, consider borrowing or renting. Borrow from a neighbor or social media site.



SHARE, SWAP OR SELL

Sell items you no longer want and find bargains at consignment shops, garage sales, thrift stores, online exchanges and auctions.



CHOOSE TO REUSE

Use reusable mugs, water bottles, utensils and bags. Store these in your car or at your desk so you will always be prepared.

Before you buy, use or discard an item, ask yourself:

REDUCE: Can I get this item used or with less packaging?

REUSE: Can I, or someone else, use this item again?

RECYCLE: Can I recycle this item after I use it?

BUY RECYCLED: Can I buy this item with recycled content?



7227 NE 55th Avenue
Portland, OR 97218-1215

1-800-592-9995

M-F 7 am -7 pm, SAT 9 am-1 pm
Multi-language materials available
wmnorthwest.com/lakestevens

Información en español

Online Billing: www.wm.com/myaccount

Billing Information

You may pay your bill online at bit.ly/WMbillpay or sign up for paperless billing at no cost. Watch for more information when you receive your customer ID number on your WM invoice.

PRSRRT STD
U.S. POSTAGE
PAID
TACOMA, WA
PERMIT NO. 572

#290_Lake Stevens Guide_Odd_2025

City of Lake Stevens

Recycling Collection Guide 2025

