



City of Federal Way

Commercial Collection Guide | 2025

wmnorthwest.com/federalway | 253-833-3333



My WM

Use the My WM App or this guide for tips and resources to improve garbage and recycling at your business. Others have found it easy to achieve success using these resources.

Invite WM's Recycling Outreach staff to company meetings and events to provide fun and informative recycling presentations for employees. We're here to help! Contact recyclenw@wm.com for more info.



Scan this code to download the My WM app



Free Recycling Service for Businesses

Each business is eligible for up to two 96-gallon recycling carts serviced weekly at no charge.

This includes businesses that share garbage service and individual businesses located within a business park or commercial building.



Illegal Dumping and Theft of Services

- "Illegal dumping" is garbage placed on the ground instead of a container. If reported, Code Compliance will require the business owner to arrange for clean up.
- "Theft of service" is off-site material getting dumped in your garbage container without your permission (stealing your garbage service).
- Report to Police Department: 253-835-2121 [federalwaywa.gov/page/file-police-report-online](https://www.federalwaywa.gov/page/file-police-report-online)

Blocked Containers or Contaminated Recycling

WM maintains a "Haul or Call" policy for collection.

We ask customers to keep containers unblocked (parked cars, overflow material, locked gates, etc.) so that we can empty and replace them in a timely fashion.

- If a driver finds a container blocked or contains contamination, they will call WM Dispatch.
- Dispatch will contact the customer while the driver waits up to 4 minutes for access before moving on with the route.
- If Dispatch reaches the customer, they will ask the customer to clear access or remove the contamination and arrange for later collection if necessary.
- If Dispatch is unable to contact the customer, they will leave a message explaining the circumstances, and ask the customer to call Customer Service to schedule another collection. Extra service charges may apply.



Save Time and Money

- Encourage recycling right. By increasing recycling and reducing garbage collection, you can reduce your bill.
- Right size your container and frequency of pickup so material doesn't get left on the ground.
- Place garbage and recycling containers together for easy employee access.
- Consider contracting out garbage enclosure monitoring and maintenance.
- Request slotted lids for recycling containers to reduce contamination.
- Instruct employees to flatten boxes.
- Remove bulky items and hazardous waste from enclosures.



Keep Enclosures Clean

- Right size your container and frequency of pickup to avoid charges for extra set-outs.
- Close container lids to deter pests and keep rainwater from entering your container.
- Request free replacement of broken/damaged WM containers and lids.
- Pick up any litter or debris around containers frequently.
- Install cameras to monitor enclosures to deter illegal dumping.

Garbage trucks cannot pick up bulky items. WM offers a separate fee-based bulky item pick up service.

Hazardous waste is banned from garbage/recycling containers.

wmnorthwest.com/federalway | 253-833-3333

2. GARBAGE & RECYCLING TIPS

3. RECYCLING

4. YARD+FOOD WASTE

5. GARBAGE

6. OTHER RESOURCES / HAZARDOUS WASTE

7. OTHER RECYCLING & DISPOSAL OPTIONS

8. MONTHLY GARBAGE & YARD WASTE RATES

My WM

Use the My WM App or this guide for tips and resources to improve garbage and recycling at your business. Others have found it easy to achieve success using these resources.

Invite WM's Recycling Outreach staff to company meetings and events to provide fun and informative recycling presentations for employees. We're here to help! Contact recyclenw@wm.com for more info.



Scan this code to download the My WM app



RECYCLING



Place only the items listed below in your **blue** recycling container.

Metal

ALUMINUM & TIN CANS

Place tin lids in can, crimp shut.

SCRAP METAL

Small, non-working metal appliances, pots, tools, etc. Limit 2' x 2' x 2', 35lbs; no wood, plastic, or rubber attachments; no sharp metal.



Glass

JARS & BOTTLES (ALL COLORS ACCEPTED)

Only bottles and jars—no other types or shapes of glass are allowed.

Paper and Cardboard

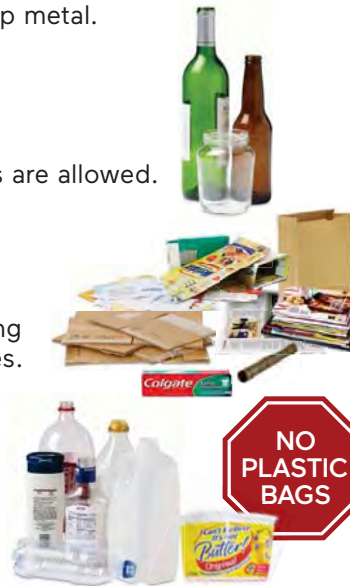
CLEAN & DRY

Most types of paper and cardboard are accepted, as long as it is clean and dry. Instruct employees to flatten boxes.

Plastic

BOTTLES, JUGS & TUBS

Only recycle these "shapes" of plastic containers—do not worry about the recycling symbol or number.



RECYCLING TIPS

Clean · Empty · Loose

No plastic bags, garbage bags or "recycling" bags allowed. Empty clean recyclables out of bags and boxes into the cart so that they can be easily sorted.



Empty and rinse out all food residue. Labels do not need to be removed.



Recycle Right. See results in your bill: The value of materials recycled in carts will be credited back to Federal Way businesses on the garbage bill. This will change annually based on the amount of materials recycled by all of Federal Way.



Less Packaging. Look for products that use less packaging. When manufacturers make their products with less packaging, they use less raw material. This reduces waste and costs. These extra savings can be passed along to the consumer. Buying in bulk, for example, can reduce packaging and save money.

Recycle Right®

- Recycle paper, cardboard, glass, tin/aluminum cans, and plastic bottles, jugs, and tubs in the same container!
- Contact the City to request small interior recycling containers to place next to desks, copiers, and break rooms. (While supplies last.)
- Invite WM Recycling Outreach staff to help set up your recycling program and speak at staff meetings. Contact recyclenw@wm.com for more info.



wmnorthwest.com/federalway | 253-833-3333

3. RECYCLING

4. YARD+FOOD WASTE

5. GARBAGE

6. OTHER RESOURCES / HAZARDOUS WASTE

7. OTHER RECYCLING & DISPOSAL OPTIONS

8. MONTHLY GARBAGE & YARD WASTE RATES

My WM

Use the My WM App or this guide for tips and resources to improve garbage and recycling at your business. Others have found it easy to achieve success using these resources.

Invite WM's Recycling Outreach staff to company meetings and events



Scan this code to download the My WM app



YARD+FOOD WASTE



These go in your **green** yard+food waste cart.

Yard Waste & Plants



Food Scraps & Leftovers

ALL FOOD INCLUDING MEAT, CHEESE AND BONES



Paper

MUST BE UNCOATED (NOT SHINY OR PLASTIC-LINED)



No plastic bags, plant pots, soil, sod, rocks, liquids, shredded paper or pet waste.

FOOD SCRAP TIPS

Collecting food scraps at work is easy!

Here's how:

- Set up centralized collection stations, using large or small collection containers.
- Outreach staff can help you set it up.



Use a stylish compost pail.



Use a reusable kitchen container or tall collection bin.



Place your food waste container near your recycling and garbage containers.

Organics Management Law impacts businesses in 2025 and beyond:

Businesses generating at least **four cubic yards of organic waste material per week** must arrange for yard and food waste service in Federal Way by **Jan 1st 2025**.

Businesses that generate at least **96 gallons of organic waste a week** must arrange for organics collection or compost materials on site by **Jan 1st 2026**.

Reduce waste with yard+food waste collection.

Instead of sending food scraps and food-soiled paper products to the landfill, yard+food waste collection turns them into compost.

A visit from a WM Recycling Specialist can help identify compostable materials in your garbage and assist you in setting up your collection system.

You can request a free site visit by contacting recyclenw@wm.com.

Painted and treated wood, concrete, rocks, and dirt are not allowed in your yard+food waste cart.

Use King County's "What Do I Do With?" **Lookup Tool** to find other disposal and recycling solutions for your business.



Visit recyclefood.com for a list of compostable bag retailers near your business.

Empty reusable containers into the yard+food waste cart frequently, and rinse out.



Visit our commercial **yard+food waste site** for additional information. wmnorthwest.com/federalway/comcompost.html



wmnorthwest.com/federalway | 253-833-3333

4. YARD+FOOD WASTE

5. GARBAGE

6. OTHER RESOURCES / HAZARDOUS WASTE

7. OTHER RECYCLING & DISPOSAL OPTIONS

8. MONTHLY GARBAGE & YARD WASTE RATES

My WM

Use the My WM App or this guide for tips and resources to improve garbage and recycling at your business. Others have found it easy to achieve success using these resources.



Scan this code to download the My WM app



GARBAGE



Bag these and put them in your **gray** garbage container. Collected weekly.

Non-Recyclable Plastic



Non-Recyclable Glass



Non-Recyclable Paper



Non-Recyclable Metal



Other Garbage



If fuel remains, take small cylinders to the Wastemobile.



Propane has no scent but the valve will still smell like rotten eggs when cylinder is empty.

GARBAGE TIPS

Double bag pet waste, vacuum dust, sawdust and cold ashes.



DO NOT put liquids, yard waste, hazardous waste, batteries, or recycling in the garbage.



The numbers no longer matter. If a plastic item isn't a bottle, jug, or tub, it belongs in the garbage.



Report illegal dumping. You are encouraged to report this to your business manager, and to also contact Federal Way Police.

- If there is no suspect, report the theft online at federalwaywa.gov/page/file-police-report-online
- If you have details about the suspect (description, license plate, vehicle make/model, etc.), call the police non-emergency number at 253-835-2121

Dumpster Rental
Order roll-off dumpsters for large cleanups, junk and trash removal, and construction and demolition debris.

Contact us at **253-833-3333** to order.



wmnorthwest.com/federalway | 253-833-3333

5. GARBAGE

6. OTHER RESOURCES / HAZARDOUS WASTE

7. OTHER RECYCLING & DISPOSAL OPTIONS

8. MONTHLY GARBAGE & YARD WASTE RATES

My WM

Use the My WM App or this guide for tips and resources to improve garbage



Scan this code to download the My WM app

OTHER RESOURCES

Become Recycling Allstars!



Take our pledge to be entered to win one free pizza party and recycling education day for your staff courtesy of WM.



■ Scan QR Code to Sign Up!

Recognition

Sign up for the EnviroStars program to become a certified green business and get ideas to become more sustainable.

envirostars.org



Give it Away

Some business items can be sold or given away.

Try posting a free ad. You will be amazed at what other people might want.

- Buy Nothing Project
- Craigslist
- Facebook Marketplace
- Nextdoor
- OfferUp



Transfer Stations

Bulky items can also be dropped off at a King County transfer station (for a fee).

- Bow Lake Transfer Station
18800 Orillia Rd S
Tukwila
206-477-4466
kingcounty.gov/solidwaste
- Algona Transfer Station
35315 West Valley Hwy S
Algona
206-477-4466
kingcounty.gov/solidwaste

HAZARDOUS WASTE

Never dispose of **hazardous waste** in the garbage, recycling, yard+food waste, or down the drain.

Federal Way businesses may be eligible for no-fee hazardous waste disposal up to four times a year at Haz Waste Program collection sites.

To learn requirements visit: kingcountyhazwastewa.gov/en/business-disposal or call the Haz Waste Help Line at 206-296-4692.

Auburn Hazardous Wastemobile

📍 **1101 Outlet Collection Way, Auburn** — outside loading dock area near Nordstrom Rack. Saturdays and Sundays, except holiday weekends, 10am-5pm

ACCEPTED ITEMS:



Auto Products



Oil-based Paint*, Thinners & Solvents
*Visit paintcare.org for info about recycling paint.



Fuel & Flammables



Cleaners



Batteries & Fluorents



Weed & Bug Killer

Visit kingcountyhazwastewa.gov for a full list of accepted items, details, and restrictions. Hazardous Waste Hotline: **206-296-4692**

CAUTION ⚠️ DANGER POISON

These four words are on the labels of many products we use in our homes and businesses. These products are considered hazardous.

USE GREENER ALTERNATIVES

Visit kingcountyhazwastewa.gov for green cleaning recipes and other helpful information.

NOT ACCEPTED:

- × Latex Paint* × TVs × Computers
- × Empty Containers × Tires
- × Electronics × Explosives
- × Medicine × Garbage

* free disposal options at paintcare.org

wmnorthwest.com/federalway | 253-833-3333

6. OTHER RESOURCES / HAZARDOUS WASTE

7. OTHER RECYCLING & DISPOSAL OPTIONS

8. MONTHLY GARBAGE & YARD WASTE RATES

OTHER RECYCLING & DISPOSAL OPTIONS

Want to know what goes where in Federal Way?



Download the Recycle Coach app or visit our website by scanning the QR code or visiting: Uqr.to/RecycleCoachFW

Many items are recyclable, but don't belong in your curbside recycling cart.

BATTERIES

The City of Federal Way offers free battery recycling locations.

Find out more at this website:

- federalwaywa.gov/page/battery-recycling

Also accepted at the Wastemobile.

BRANCHES & STUMPS

- Bow Lake Transfer Station
18800 Orillia Rd S, Tukwila
206-477-4466

- kingcounty.gov/solidwaste

BUILDING & REMODELING MATERIALS

Many construction materials cannot be thrown away as garbage. Area vendors accept these materials when kept separate from other debris.

- kingcounty.gov/greentools

- Habitat for Humanity ReStore
4824 S Tacoma Way, Tacoma
253-779-8149

- thehabitatstores.org

- Second Use Tacoma
2328 Fawcett Ave, Tacoma
253-267-0820

- seconduse.com

CLOTHING & HOUSEHOLD GOODS

Donate used clothing and household goods to clothing banks and secondhand stores. Ripped, stained or damaged clothes, shoes, and linens aren't garbage anymore. Most secondhand stores accept these.

- kingcounty.gov/threadcycle

CONFIDENTIAL DOCUMENTS

The Washington State Office of the Attorney General publishes a list of free community shredding events.

- Community Shred Events
800-551-4636

- atg.wa.gov/shredathon.aspx

ELECTRONICS

- takeitbacknetwork.org

- UpTekk
101 Lund Rd, #A/B, Auburn
206-497-9979

- uptekk.com

- SBK Recycle
6815 26th St E, Fife
253-539-9095

- sbkrecycle.com

FLUORESCENT BULBS & TUBES

- lightrecycle.org

- Northshore Ace Hardware
35419 21st Ave SW, Fed. Way
253-835-5052

- Batteries Plus Bulbs
31830 Pac Hwy S, Federal Way
253-666-9555

Also accepted at the Wastemobile.

LARGE APPLIANCES & SCRAP METAL

- Calbag Metals
1602 Marine View Dr, Tacoma
253-572-6800

- calbag.com

- Schnitzer Steel
1902 Marine View Dr, Tacoma
253-572-4000

- schnitzersteel.com

- Valley Recycling
411 W Valley Hwy S, Pacific
253-288-0000

- valleyrecyclinginc.com

MATTRESSES

- Bow Lake Transfer Station
18800 Orillia Rd S, Tukwila
206-477-4466
(Disposal fees apply)

- kingcounty.gov/solidwaste

- UpTekk
101 Lund Rd, #A/B, Auburn
206-497-9979

- uptekk.com

MEDICATION

- medicinereturn.org

- Police Department Lobby
33325 8th Ave S, Federal Way
253-835-6700

- Kaiser Permanente
301 S 320th St, Federal Way
253-874-7000

- HealthPoint/Health Dept.
33431 13th Pl S, Federal Way
253-874-7634

- Virginia Mason
33501 1st Way S, Federal Way
253-838-2400

NEEDLES & SHARPS

Put needles in a puncture resistant container with a tight fitting lid.

- Public Health
33431 13th Pl S, Federal Way

- Bow Lake Transfer Station
18800 Orillia Rd S, Tukwila
206-477-4466

PAINT

Latex and oil-based paint are accepted at no charge at PaintCare drop-off locations. For large quantities refer to the website.

- paintcare.org

PLASTIC BAGS

Clean plastic bags, dry cleaning bags and other types of film plastic can be recycled.

- bagandfilmrecycling.org

REFRIGERATORS & FREEZERS

Refrigerators and freezers must be specially handled, so recycling options are more limited and costly than other appliances.

- Bow Lake Transfer Station
18800 Orillia Rd S, Tukwila
206-477-4466

- kingcounty.gov/solidwaste

STYROFOAM™ BLOCKS & PACKING PEANUTS

- Styro Recycle
23418 68th Ave S
(West Valley Hwy), Kent
253-838-9555

- styrorecycle.com

SURPLUS FOOD

It's easy to donate surplus food to local food assistance programs. State and national Good Samaritan laws protect you—plus there could be tax deductions. Find out how simple it is for your business to donate food, cut waste disposal costs, and help feed hungry people in our community by visiting:

- mschelps.org

TVS & COMPUTERS

Free—working or not.

- ecyclewashington.org

- Goodwill
32521 Pacific Hwy, Federal Way
253-946-0447

- Video Only
1643 S 352nd St, Federal Way
253-661-7700

UNUSABLE FURNITURE & BULKY ITEMS

- 206-477-4466
kingcounty.gov/solidwaste

- Bow Lake Transfer Station
18800 Orillia Rd S, Tukwila

- Algona Transfer Station
35315 West Valley Hwy S, Algona

Please contact businesses for current rates, hours and restrictions.

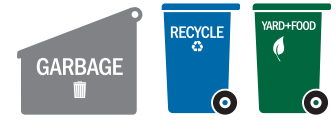
Service providers are highlighted as a courtesy to the public and not as an endorsement or guarantee of the quality of services offered or provided.

wmnorthwest.com/federalway | 253-833-3333

MONTHLY GARBAGE & YARD WASTE RATES

January 1, 2025 thru
December 31, 2025

Rates do not include
taxes or applicable fees.



GARBAGE		1 Collection per Week	2 Collections per Week	3 Collections per Week	4 Collections per Week	5 Collections per Week
	64-gallon cart	\$44.31	---	---	---	---
96-gallon cart	\$59.40	---	---	---	---	---
1-yard container	\$149.50	\$299.07	\$448.63	\$598.20	\$747.80	
1.5-yard container	\$201.80	\$403.71	\$605.61	\$807.53	\$1,009.43	
2-yard container	\$254.30	\$508.66	\$763.05	\$1,017.42	\$1,271.79	
3-yard container	\$359.87	\$719.85	\$1,079.79	\$1,439.75	\$1,799.75	
4-yard container	\$455.84	\$911.81	\$1,367.77	\$1,823.71	\$2,279.68	
6-yard container	\$654.00	\$1,308.03	\$1,962.15	\$2,616.18	\$3,270.29	
8-yard container	\$830.76	\$1,661.62	\$2,492.48	\$3,323.34	\$4,154.18	
Extra yardage, per yard	\$20.62	---	---	---	---	---

RECYCLING

All-in-one/mixed or single material (cardboard, etc).

No-Charge Mixed Recycling: Up to two 96-gallon carts per business at no charge, emptied weekly. Each individual business is eligible, even if using shared garbage service on site.

More Recycling Service: Contact us to learn how WM's recycling services could reduce your bill. Charges apply.

Mandatory Recycling: The City of Federal Way requires all businesses to recycle. WM wants to help you meet these requirements. Questions? Email us at recyclenw@wm.com or call 253-833-3333.

YARD+FOOD WASTE

1 Collection per Week

35-gallon cart	\$14.25
64-gallon cart	\$15.04
96-gallon cart	\$15.88
More container service	Interested in a larger container? Contact us for rates.

GARBAGE COMPACTOR/DROP BOX

Compactor drop box haul + disposal	\$297.32 per haul + \$203.83 per ton
Drop box haul + disposal	\$245.19 per haul + \$203.83 per ton

TEMPORARY GARBAGE DROP BOX

90 days or less.

	Hauling Charge	Disposal Charge	Container Daily Rent	Container Delivery
10-yard container	\$289.86	\$203.83 per ton	\$2.86	\$112.88
15-yard container	\$289.86	\$203.83 per ton	\$3.47	\$112.88
20-yard container	\$289.86	\$203.83 per ton	\$4.08	\$112.88
25-yard container	\$289.86	\$203.83 per ton	\$4.72	\$112.88
30-yard container	\$289.86	\$203.83 per ton	\$5.33	\$112.88
40-yard container	\$289.86	\$203.83 per ton	\$5.91	\$112.88

MISC. SERVICES

Rates are per month unless shown otherwise.

Return trip (container blocked or non-serviceable) (per pick-up)	\$18.49
Redelivery (per container)	\$37.03
Roll-out cart (per cart, per 25 ft. after the initial 25 ft.) (per week)	\$7.88
Clean/deodorize compost carts (per yard of container including return delivery)	\$12.32

Recycle Right. See results in your bill: The value of materials recycled will be credited back to Federal Way businesses on the garbage bill. This will change annually based on the amount of materials recycled by all of Federal Way. Make sure to recycle only plastic bottles, jugs and tubs; tin cans, aluminum cans, scrap metal, paper, and cardboard and that all materials are clean, dry, and free from foods and liquids.



wmnorthwest.com/federalway | 253-833-3333



CONTACT INFO



CURBSIDE GARBAGE, RECYCLING, & YARD+FOOD WASTE COLLECTION

📞 253-833-3333 (M-F 7 am-7 pm, Sat 8 am-5 pm)

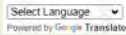
✉️ pnwrsservices@wm.com

📱 My WM (App on Apple and Android)

🌱 ThinkGreenFederalWay

💬 Live Chat: wm.com (M-F 7 am-5 pm)

🌐 wmnorthwest.com/federalway



Information is available at the above website using Google translate

정보는 구글 번역기를 사용하여 상기 웹사이트에서 확인할 수 있습니다.

La información está disponible en el sitio web anterior mediante el traductor de Google.

Информация доступна на вышеуказанном сайте за счет использования Google Translate.

Информация доступна на вищевказаному веб-сайті за допомогою Google Translate.

Thông tin có sẵn tại trang web ở trên, vui lòng chọn chế độ Google Dịch.

Inclement Weather – Service Alerts

Putting safety first, minimizing disruption for customers and making sure you have the best information available. That's our commitment to you when conditions prevent us from collecting as usual.

🌐 servicealerts.wmnorthwest.com/federalway

♻️ Printed on recycled paper

COM_FederalWay_2025



Environmental Services Division RECYCLING & COMPOSTING INFORMATION

📞 253-835-2761 ✉️ recycle@federalwaywa.gov

🌐 federalwaywa.gov/recycling

🗑️ King County TRANSFER STATIONS (DUMP)

📞 206-477-4466 🌐 kingcounty.gov/solidwaste

📍 **Algona Transfer Station**
35315 W Valley Hwy S, Algona

📍 **Bow Lake Transfer Station and Recycling Center**
18800 Orillia Rd S, Tukwila

HAZARDOUS WASTE DISPOSAL

📍 **Auburn Hazardous Wastemobile**
1101 Outlet Collection Way, Auburn

📞 206-296-4692 🌐 kingcountyhazwastewa.gov

♻️ Recycling Databases

Recycle Coach

🌐 uqr.to/RecycleCoachFW

“What Do I Do With...?”

📞 206-477-4466 🌐 kingcounty.gov/whatdoidowith

Washington State Recycling Database

📞 1-800-RECYCLE (732-9253) 🌐 1800recycle.wa.gov