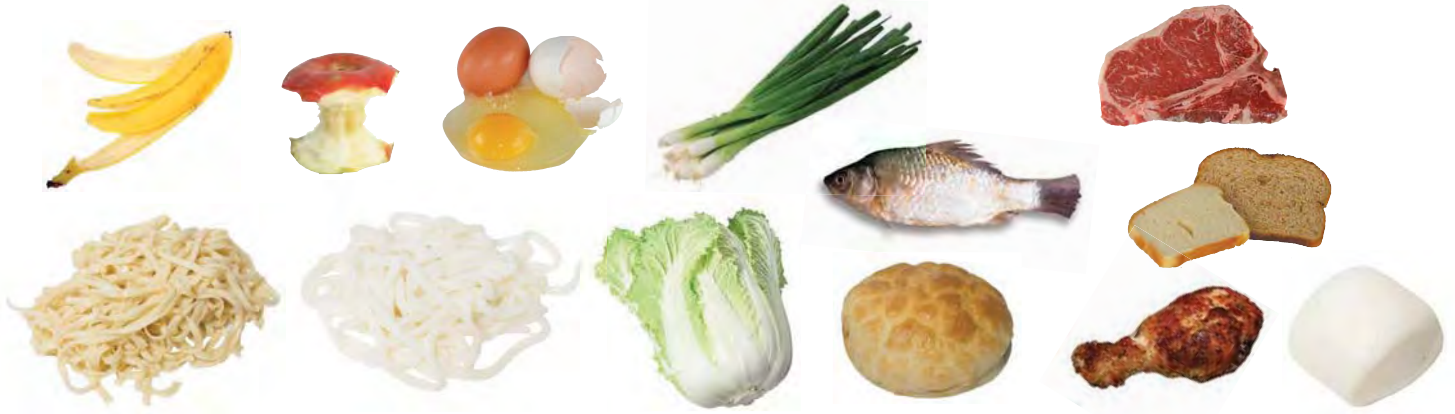


堆肥 | 食物、廚餘及庭院碎屑

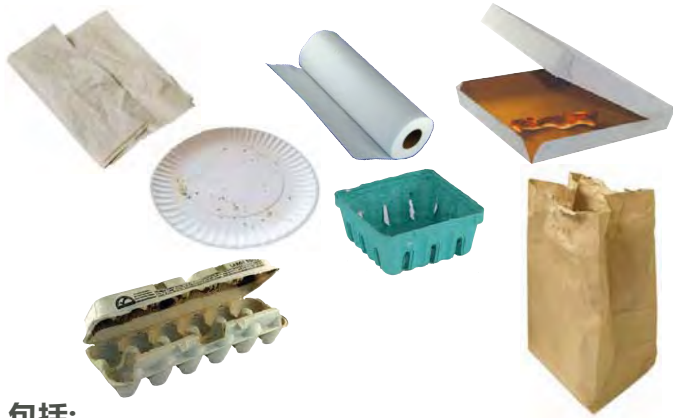


把這些物品放入你的堆肥箱內

食物殘渣和剩菜



非鍍層紙張



- 包括:**
- 非鍍層, 無光澤的紙、容器、碟、和盒子
- 接受沾有食用油或髒的紙製品**

植物和庭院碎屑



- 包括:**
- 植物、草屑、及雜草
(拆除塑膠盆、繩、園藝膠帶或紮帶)
 - 樹葉、樹、樹枝、及樹根
(請切段, 4英尺長, 直徑4英寸以下)
- 拆除南瓜燈的蠟燭**

不接受塑膠、玻璃、金屬、液體、食用油或寵物糞便

食物回收成堆肥, 簡單環保又省心!

你可以使用以下的容器收集廚餘, 然後再把廚餘放入堆肥箱內。

將收集好的食物殘渣倒入你的堆肥回收箱。堆肥將於下一個回收日被回收。

1



一個新穎的堆肥回收桶

2



一個可再用的廚餘容器, 例如舊的水瓶

3



一個紙袋或認可的堆肥袋

YARD+FOOD | YARD DEBRIS AND FOOD SCRAPS

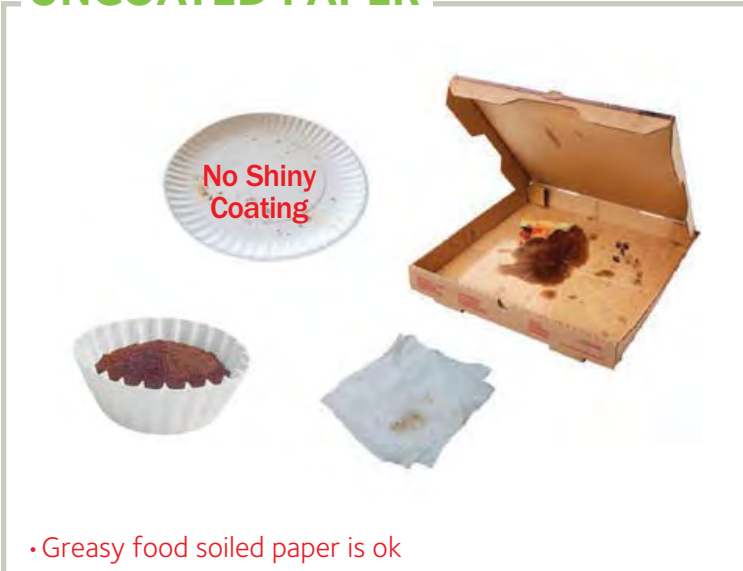
These items go in your green container.



FOOD SCRAPS AND LEFTOVERS

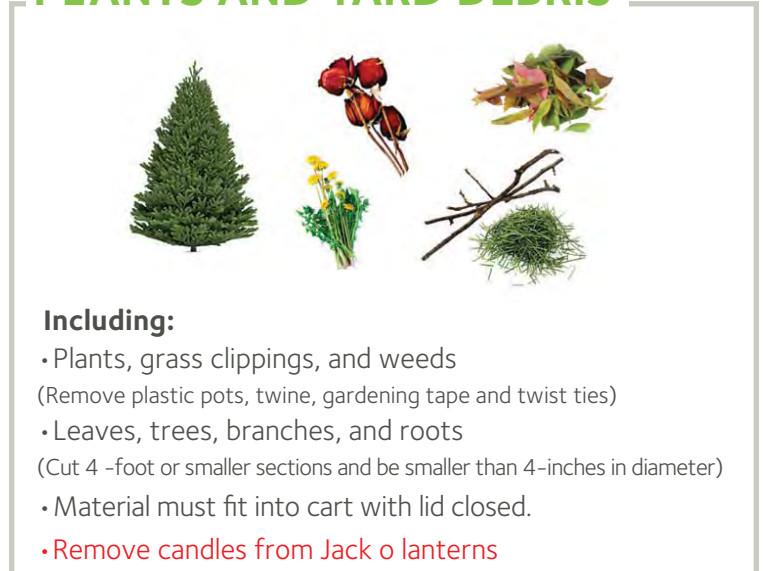


UNCOATED PAPER



• Greasy food soiled paper is ok

PLANTS AND YARD DEBRIS



Including:

- Plants, grass clippings, and weeds
(Remove plastic pots, twine, gardening tape and twist ties)
- Leaves, trees, branches, and roots
(Cut 4-foot or smaller sections and be smaller than 4-inches in diameter)
- Material must fit into cart with lid closed.
- Remove candles from Jack o lanterns



NO PLASTIC, COOKING OIL, PET WASTE, GLASS, METAL OR LIQUIDS

BE A FOODCYCLER!

It's easy to do!

Here's what you can use to collect food scraps before you add it to your compost cart:

1



A stylish compost pail.

2



A reusable kitchen container, such as an old pitcher.

3



A paper bag or an approved compostable bag.

www.wmnorthwest.com/auburn

Food+Yard_Chinese_2021



253-939-9792

Mon-Fri 7am-7pm, Saturday 9am-1pm