



City of Kirkland

Single Family Service Guide | 2023

Guía de servicios unifamiliares | 单身家庭服务指南 | Руководство по обслуживанию для одной семьи | Guia de serviço unifamiliar | 1인 가족 서비스 안내



Languages

To request this in other formats or languages contact (425) 587-3831 or titlevicoordinator@kirklandwa.gov

Para pedir información sobre este documento en español, comuníquese con el coordinador del Título VI.

如需此文件中信息的简体中文版本,请发送电子邮件至 titlevicoordinator@kirklandwa.gov 或拨打 (425) 587-3831 联络 Title VI 协调员。

Свяжитесь с координатором раздела VI, чтобы запросить эту информацию на русском языке.

Para solicitar informações deste documento em português, entre em contato com o Coordenador do Título VI.

City policy prohibits discrimination against any person on the basis of race, color, national origin or sex in providing benefits and services.

Recycling Events

These items are recyclable, but not in your cart. Visit kirklandwa.gov/recycle to see upcoming events and sign up for email event reminders.



Recycling During the Holidays

Holiday Service Schedule

Collection service is not provided on Thanksgiving Day, Christmas Day, and New Year's Day.

If your regular service day falls on or after these holidays, your scheduled collection will be delayed one day that week.

Customers who normally receive service on Fridays will receive service on Saturday instead.

Week of Thanksgiving

NOV	
Thursday 23 Thanksgiving No service	Friday 24 Thursday customers serviced

Week of Christmas

DEC	
Monday 25 Christmas No service	Tuesday 26 Monday customers serviced

Christmas Tree Recycling

Unflocked, undecorated Christmas trees up to 6 feet tall can be placed beside your cart at no cost during the first two weeks of January. Taller trees should be cut down to 4 foot segments.

Put out trees next to your cart on your regular service day during the weeks of January 2 or 9, 2023.

Outside of the first two weeks of January, you can cut trees to 3 foot segments and put fully inside your yard waste cart.

Gift Cleanup

Recycle wrapping paper unless it has glitter or foil. Reuse bows, ribbons, gift bags and tissue paper, or throw away.



Recycle *Reciclaje*



What's new?
No plant pots, lid rules

DO NOT BAG RECYCLING



No plastic bags

No bolsas de plástico

ITEMS MUST BE CLEAN + EMPTY



No dirty items

Asegúrate que todos los materiales reciclables estén vacíos y limpios

Plastic Bottles *Botellas de plástico*



Empty

Screw caps back on empty plastic bottles

Recycle plastics by shape—only **bottles, jugs, tubs and cups** can be recycled.
Throw away all other plastic—even if it has a “recycle symbol!”

Plastic Tubs + Cups *Contenedores de plástico*



Plastic Jugs *Jarras de plástico*



This is too dirty to recycle!
Wash out food & liquid containers before recycling. Throw away dirty items.

Paper + Cardboard *Papel y cartón*



No cap

Metal Cans + Scrap Metal *Latas de metal y chatarra*

Larger than 3", under 2'x2', less than 35lbs. No sharp or greasy parts. No wood, plastic or rubber (pot handles OK).



Empty

Glass Bottles + Jars *Frascas y botellas de vidrio*



Lids *Tapas*



Metal lids that are 3 inches wide or larger can be recycled loose.

Throw away smaller metal lids and caps. Screw back on plastic bottle caps and jug lids. Snap on tub lids. Throw away loose plastic lids.



Compost Compost



Yard Waste *Plantas, flores y desechos de jardín*

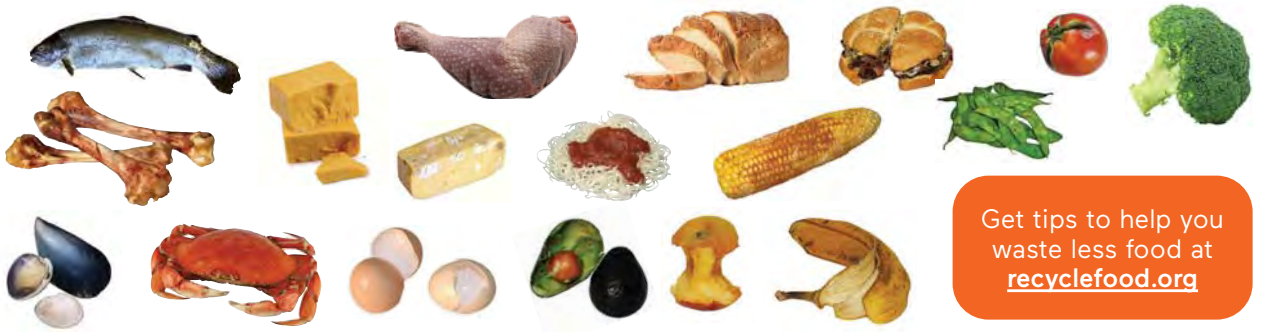
Up to 4' long and 4" diameter.



Untreated,
no paint or stain,
remove nails.

Food Scraps *Restos de comida*

Remove and throw away stickers, rubber bands and ties.



Get tips to help you
waste less food at
recyclefood.org

Food-Soiled Paper *Papeles con manchas de comida*



No plastic
pizza savers

No shiny
coating

Compostable Bags *Bolsas compostables*



Bags must be labeled **compostable**—biodegradable is not the same. Local providers of compostable bags can be found at wmnorthwest.com/kirkland/yardwaste.html.

Don't put these in your compost cart:



PLASTIC BAGS
Bolsas de plástico



STYROFOAM™
Poliestireno



GLASS
Vidrio



PLASTIC
Plástico

Garbage *Basura*



Throw out all items not accepted in recycling or compost waste carts, except hazardous waste (see *Hazardous Waste* page).

Some items, noted, can be recycled through drop-off programs. See *Recycling Beyond the Cart* page.

Wrappers, Food Packaging + Dirty Items

Recipientes y cajas de comida



Recycling Beyond the Cart

(see page 7)



Drop-off recycling available

Utensils, Straws + Small Items

Utensilios de plástico y pajitas



Screw plastic bottle caps back on to recycle

Other Plastic

Otros artículos de plástico



Diapers, Wipes + Pet Waste

Pañales y excrementos de mascotas



No disposable wipes are flushable!

Kitty litter (double bag)

Sharp Items

Objetos afilados



Other *Otros productos*



Cool ashes (double bag)

Cords + Chains *Cables y cadenas*



Hazardous Waste



Drop-off at Factoria Household Hazardous Waste Facility

Safely dispose of hazardous waste for no cost. Visit their website for all accepted materials.

13800 SE 32nd St, Bellevue
Tue-Fri 8-4 | Sat-Sun 9-5
No appointment needed.

kingcountyhazwastewa.gov
haz.waste@kingcounty.gov
(206) 296-4692

Auto Products



Motor oil, oil filters, antifreeze, auto fluids

Fuel



Gasoline, propane and butane tanks, kerosene

Oil-Based Paint + Solvents



Oil-based paint, paint thinner, stains, polish, varnish, solvents, spray paint

Batteries + Fluorescents



Cleaners



Weed/Bug Killer



Is it hazardous?

You can also check the label for these words or symbols:



Do Not Bring

Do not bring asbestos, explosives, or medical sharps to hazardous waste facilities.

Latex Paint Recycling

Drop off latex paint, water-based stains and clear finishes for recycling, for a small fee.

Find locations at: kingcounty.gov/takeitback.



Latex Paint Disposal

Stir kitty litter into latex paint to dry it out, then throw it away.

Learn about proper paint cleanup at kirklandwa.gov/paint.

Statewide Paint Recycling



This statewide program will offer more drop-off locations and accept both latex and oil-based paint for recycling.

A small fee will be charged for recycling. Visit paintcare.org/WA to learn more.

Bulky Item Collection



Curbside Collection

Donate or sell unwanted items. WM can pick up bulky items from the curb for a fee (disposed as trash). **Customers receive one free bulky waste collection per residence per year.**

To schedule a curbside pickup call **(425) 587-0040** or drop off at Houghton Transfer Station for a fee.

See kingcounty.gov/solidwaste for more details.



Furniture + Mattresses

Broken and unusable furniture must be thrown away. Furniture left on side of road is illegal dumping.

Mattresses are accepted at our special Recycling Collection Events for a charge.



Item	Cost
Sofa/Chair/Mattress/ Box Spring/Appliance	\$33.01
Fridge/Freezer	\$44.02
Miscellaneous (per cubic yard)	\$166.87

Transfer Stations

Recycle appliances and scrap metal that won't fit in your cart (like metal furniture) at:

- ▶ Factoria Transfer Station
- ▶ Shoreline Transfer Station

Fee applies for refrigerant appliances. For more info, see kingcounty.gov/solidwaste.

Donate working appliances that are less than ten years old.



Find more options at kingcounty.gov/whatdoidowith.

Recycling Beyond the Cart



Electronics

Schedule curbside pickup of personal electronics next to your cart at **(425) 587-0040**. See accepted items at wmnorthwest.com/kirkland. Recycle large TVs, computers, and laptops with E-Cycle Washington. Locations: ecyclewashington.org.



Plastic Bags + Wrap

Bundle clean plastic bags, plastic film and wrap, and return to grocery stores. More info at plasticfilmrecycling.org.



Prescription Medicine

Find secure disposal drop boxes at med-project.org/washington.



Cooking Oil

Recycle used cooking oil in the tank at the North Kirkland Community Center. Please take your oil container home with you. Do not leave it behind.



Styrofoam™

Bring to Styrofoam™ recycling events. See kirklandwa.gov/styrofoam.



Confidential Papers + Shredding

Home shredding is not accepted in your recycle or compost carts. Shred at a free shredding event instead. For more information, visit kirklandwa.gov/recycle.



Clothing + Textiles

Schedule free curbside pick-up of textiles at **(425) 587-0040**.

Drop off textiles at Houghton Transfer Station's recycling area.

Goodwill accepts textiles for recycling.

More options at kingcounty.gov/threadcycle.



2023 Solid Waste Rates

Garbage Cart Size	Garbage Service	Cost (per month)	Cost (bi-monthly)*	Weight Limit
10gal	Weekly	\$14.18	\$28.36	40lbs
20gal	Weekly	\$28.32	\$56.64	40lbs
35gal	Weekly	\$44.09	\$88.18	65lbs
64gal	Weekly	\$80.60	\$161.20	120lbs
96gal	Weekly	\$120.89	\$241.78	180lbs
35gal	Monthly	\$11.44	\$22.88	65lbs

*Customers are billed every two months

Trash service is mandatory. Cost includes carts and weekly 64-gal recycling and 96-gal compost service. Additional taxes and fees apply. Material should fit inside the cart with the lid closed, or you may be charged for extra material.

Billing questions?

Kirkland Utility Billing | (425) 587-3150
utilitybilling@kirklandwa.gov

- ▶ Bill payments and questions
- ▶ Vacation service hold (8 week min)
- ▶ Service for disabled customers

Contact WM to change cart size.



Extra Garbage Charge

\$8.36/extra garbage (up to 32gal)

- ▶ In securely tied plastic bags
- ▶ In personal 32gal can with handles labeled "Garbage" (65lb limit)



Extra Recycling No Charge

- ▶ Loose in cardboard boxes or paper bags labeled "Recycling"
- ▶ Loose in 32gal can(s) labeled "Recycling" (65lb limit)
- ▶ Flattened cardboard boxes (3'x3' limit), next to your cart



Extra Yard Waste Charge

\$7.13/extra yard waste (up to 32gal)
Extra 96-gal cart for \$25.62/month

- ▶ In heavy kraft paper/polywoven bags
- ▶ Loose in 32gal can(s) labeled "Yard" (65lb limit)

Residential customers may place up to five extra units of yard waste per week at no additional cost during the month of November. A unit is considered 32 gallons and may be contained in paper bags, compostable bags, or properly labeled in customer-owned cans.

Collection Guides

Putting Carts Out for Service



- ▶ Place carts in the planter strip. If you don't have a planter strip, place carts where they will not block people using the sidewalk or shoulder, riding in the bike lane, or driving on the road.
- ▶ Put out carts no earlier than 24 hours before your collection day and remove from public property no later than 24 hours after service.

For examples of where to place your carts, please visit kirklandwa.gov/cartsmart.

Need service assistance?

Please contact WM:

(425) 587-0040 | wmnorthwest.com/kirkland

Mon-Fri 7-7, Sat 9-1 | Información en español

- ▶ Report missed collection
- ▶ Replace missing/damaged carts
- ▶ Change cart sizes
- ▶ Request curbside collection for textiles (free), electronics (free), or bulky items (charge)

Weather Delays

Visit servicealerts.wmnorthwest.com/kirkland for up-to-date weather delay information and FAQs.

If weather conditions delay collection, WM will collect up to twice as much garbage, recycling

and yard waste on your next regularly scheduled collection day at no extra charge.

No credits will be issued for collection delays due to weather.



WM Customer Service

(425) 587-0040

Mon-Fri 7-7 | Sat 9-1

Información en español

wmnorthwest.com/kirkland

Billing Questions

City of Kirkland Utility Billing

(425) 587-3150

utilitybilling@kirklandwa.gov

kirklandwa.gov/utility

Recycling Questions

Kirkland Recycling Hotline

(425) 587-3812

recycle@kirklandwa.gov

kirklandwa.gov/recycle



Additional Information

Scan for Kirkland Trash, Recycling,
and Compost Resources

What's inside?

- ▶ Recycle, garbage, + compost guides
- ▶ Recycling Beyond the Cart
- ▶ Hazardous waste
- ▶ Holiday schedule
- ▶ Rates



WM

7227 NE 55TH Avenue

Portland, OR 97218-1215