

Waste Management UTC Customers Percent Speak African Languages By Census Tract 2006 - 2010

Percentage

- < 1%
- 1% - 2.4%
- 2.5% - 4.9%
- 5% - 7.4%
- 7.5% - 9.9%
- 10% +

2010 Census Tracts

Incorporated Area

King County
Department of
Natural Resources and Parks
Solid Waste Division
April 1, 2014

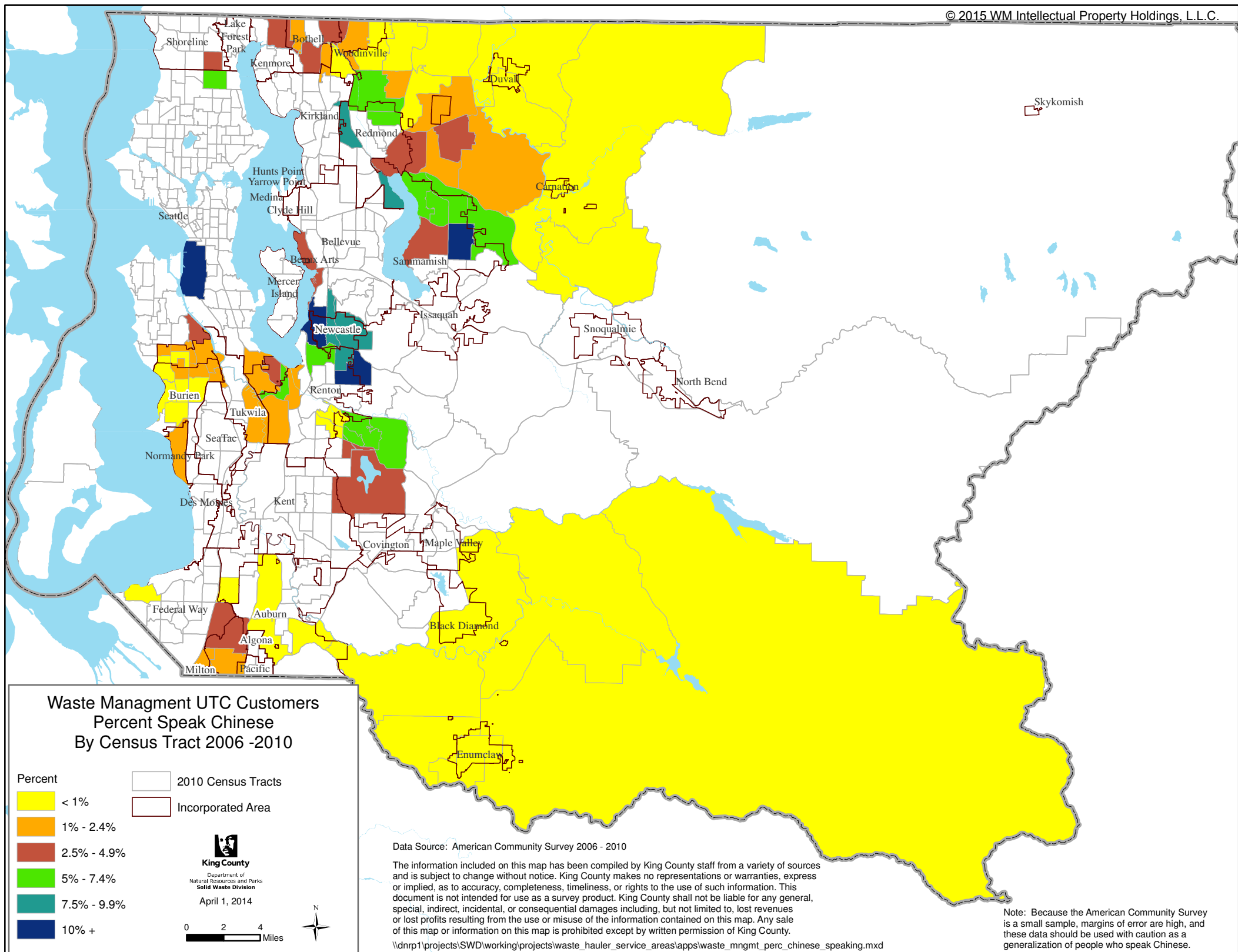
0 2 4 Miles

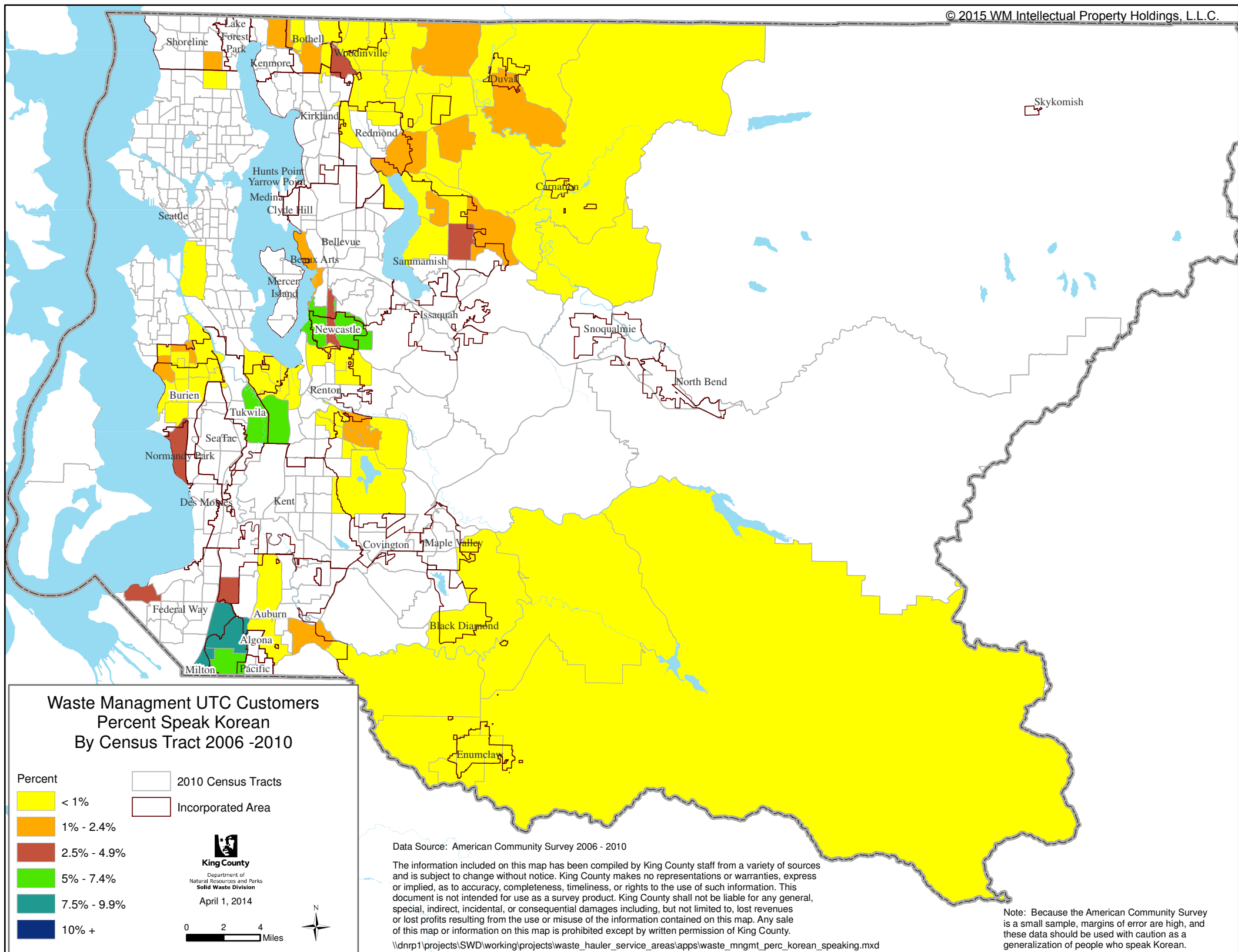
Data Source: American Community Survey 2006 - 2010

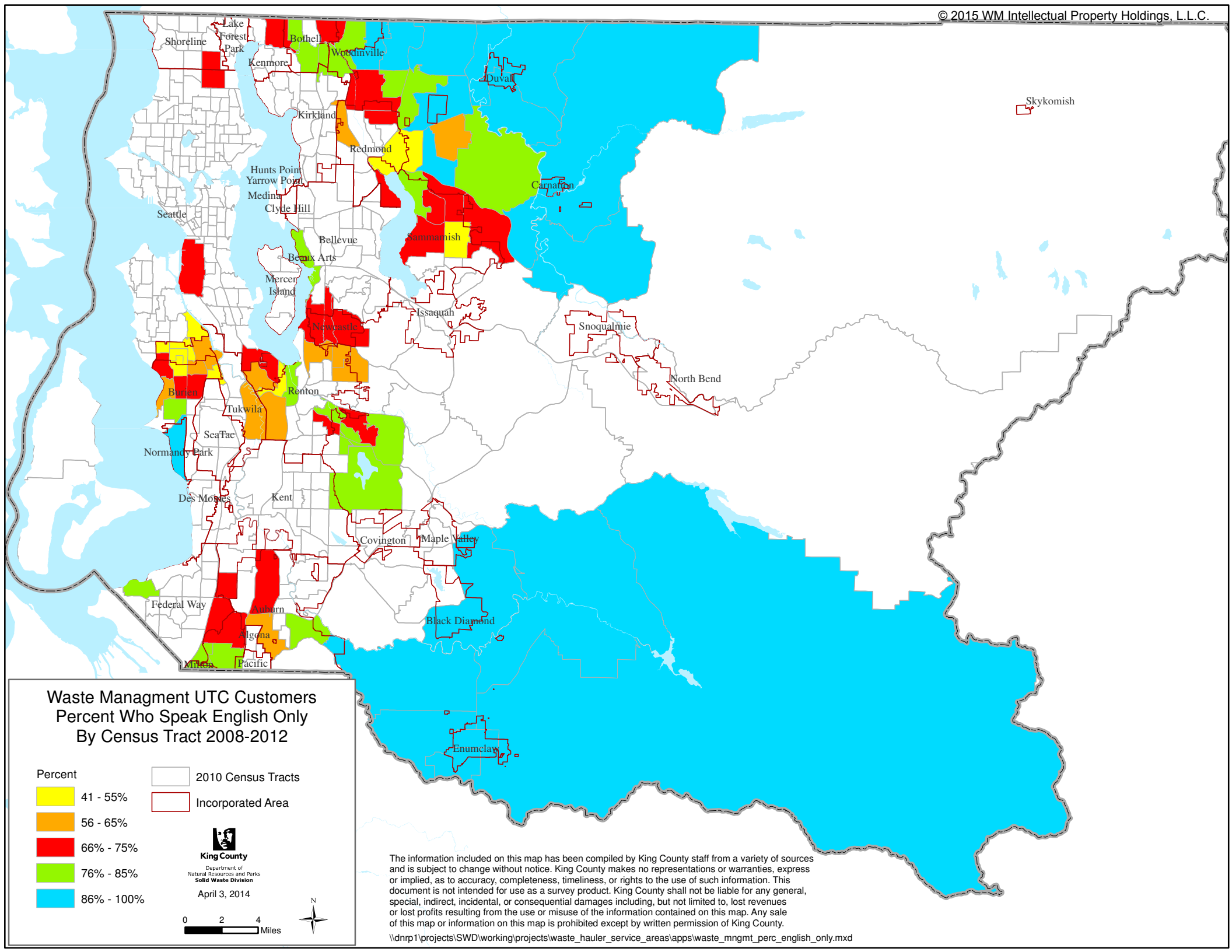
The information included on this map has been compiled by King County staff from a variety of sources and is subject to change without notice. King County makes no representations or warranties, express or implied, as to accuracy, completeness, timeliness, or rights to the use of such information. This document is not intended for use as a survey product. King County shall not be liable for any general, special, indirect, incidental, or consequential damages including, but not limited to, lost revenues or lost profits resulting from the use or misuse of the information contained on this map. Any sale of this map or information on this map is prohibited except by written permission of King County.

\\dnrp1\projects\SWD\working\projects\waste_hauler_service_areas\apps\waste_mngmt_perc_african_speaking.mxd

Note: Because the American Community Survey is a small sample, margins of error are high, and these data should be used with caution as a generalization of people who speak African Languages.





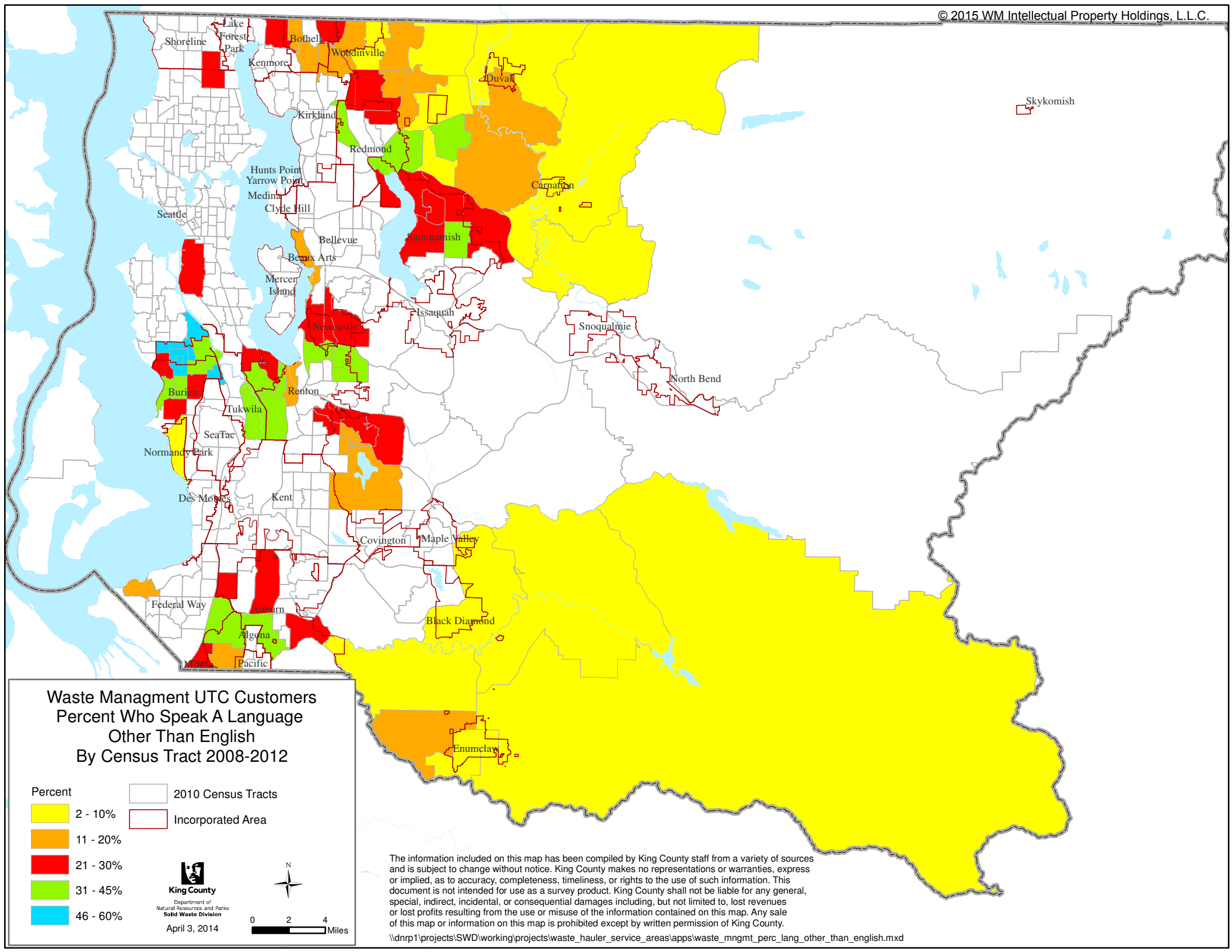


Waste Management UTC Customers Percent Who Speak English Only By Census Tract 2008-2012

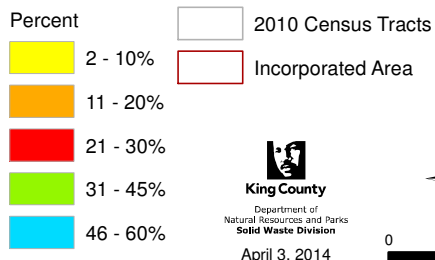
- Percent
- 41 - 55%
 - 56 - 65%
 - 66 - 75%
 - 76 - 85%
 - 86 - 100%
- 2010 Census Tracts
- Incorporated Area
- King County**
Department of
Natural Resources and Parks
Solid Waste Division
April 3, 2014
- 0 2 4
Miles
- N

The information included on this map has been compiled by King County staff from a variety of sources and is subject to change without notice. King County makes no representations or warranties, express or implied, as to accuracy, completeness, timeliness, or rights to the use of such information. This document is not intended for use as a survey product. King County shall not be liable for any general, special, indirect, incidental, or consequential damages including, but not limited to, lost revenues or lost profits resulting from the use or misuse of the information contained on this map. Any sale of this map or information on this map is prohibited except by written permission of King County.

\\dnrp1\projects\SWD\working\projects\waste_hauler_service_areas\apps\waste_mngmt_perc_english_only.mxd

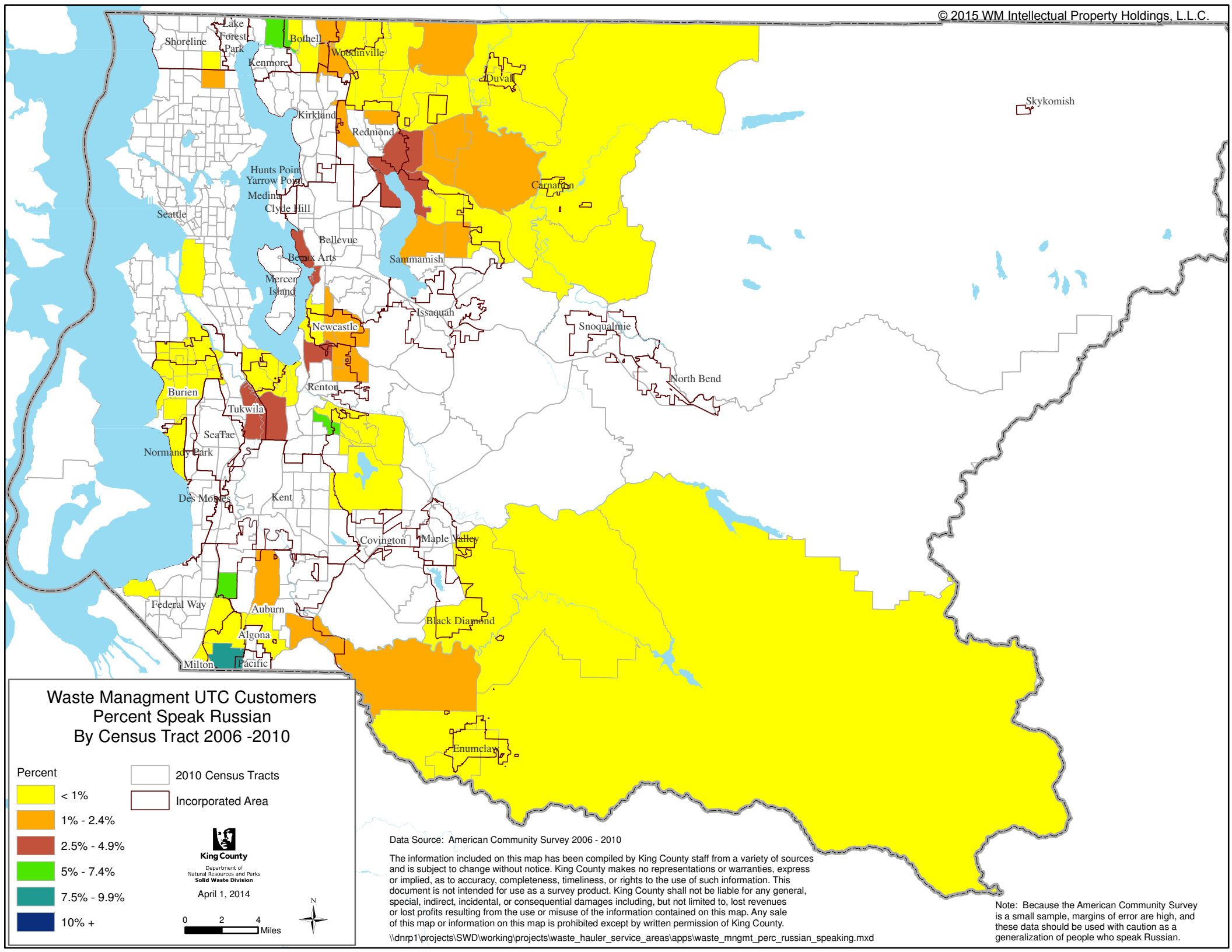


Waste Management UTC Customers
Percent Who Speak A Language
Other Than English
By Census Tract 2008-2012



The information included on this map has been compiled by King County staff from a variety of sources and is subject to change without notice. King County makes no representations or warranties, express or implied, as to accuracy, completeness, timeliness, or rights to the use of such information. This document is not intended for use as a survey product. King County shall not be liable for any general, special, indirect, incidental, or consequential damages including, but not limited to, lost revenues or lost profits resulting from the use or misuse of the information contained on this map. Any sale of this map or information on this map is prohibited except by written permission of King County.

\\dnrp1\projects\SWD\working\projects\waste_hauler_service_areas\apps\waste_mngmt_perc_lang_other_than_english.mxd



Waste Management UTC Customers Percent Speak Russian By Census Tract 2006 - 2010

Percent

- < 1%
- 1% - 2.4%
- 2.5% - 4.9%
- 5% - 7.4%
- 7.5% - 9.9%
- 10% +

2010 Census Tracts

Incorporated Area

King County
Department of
Natural Resources and Parks
Solid Waste Division
April 1, 2014

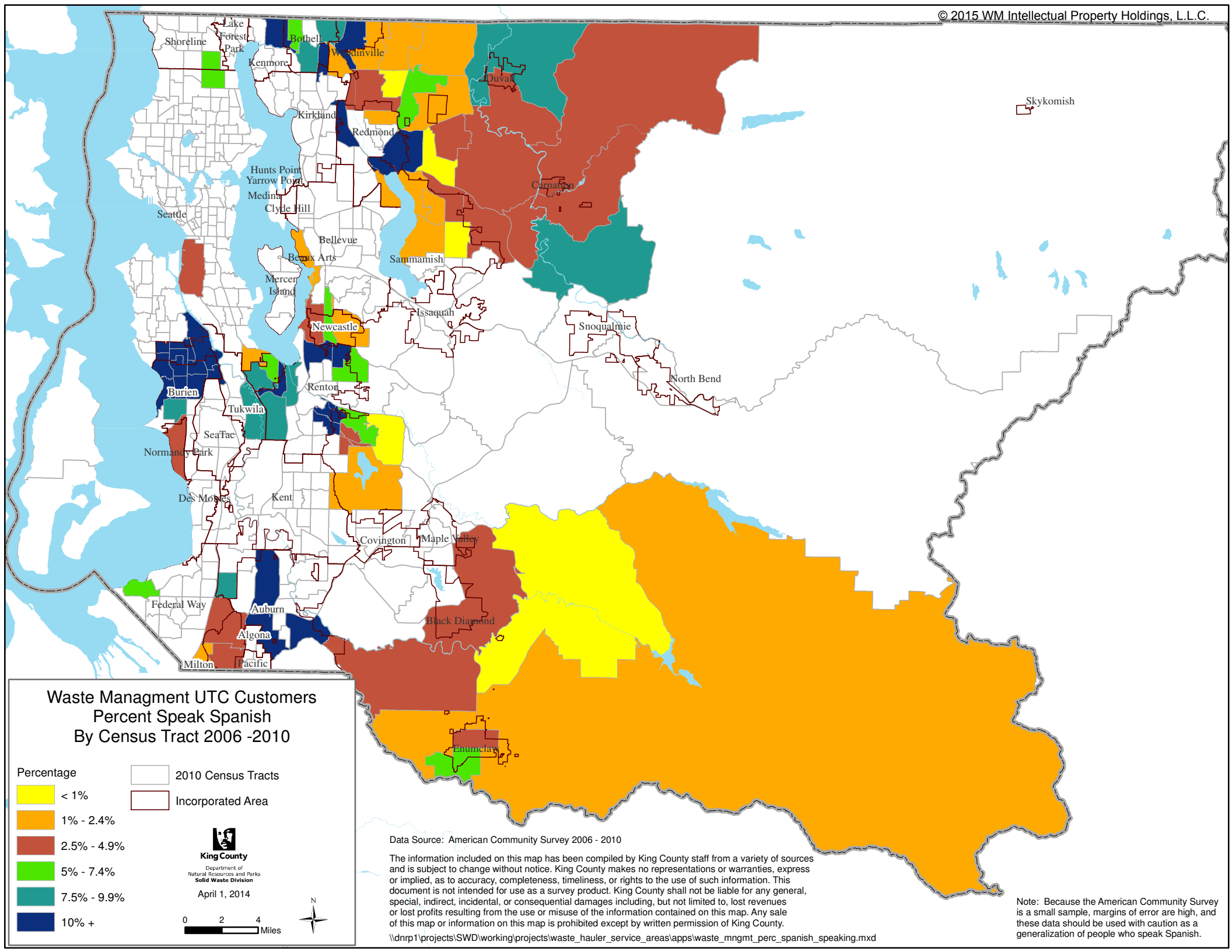
0 2 4 Miles

Data Source: American Community Survey 2006 - 2010

The information included on this map has been compiled by King County staff from a variety of sources and is subject to change without notice. King County makes no representations or warranties, express or implied, as to accuracy, completeness, timeliness, or rights to the use of such information. This document is not intended for use as a survey product. King County shall not be liable for any general, special, indirect, incidental, or consequential damages including, but not limited to, lost revenues or lost profits resulting from the use or misuse of the information contained on this map. Any sale of this map or information on this map is prohibited except by written permission of King County.

\\dnr1\projects\SWD\working\projects\waste_hauler_service_areas\apps\waste_mngmt_perc_russian_speaking.mxd

Note: Because the American Community Survey is a small sample, margins of error are high, and these data should be used with caution as a generalization of people who speak Russian.



Waste Management UTC Customers Percent Speak Spanish By Census Tract 2006 -2010

Percentage

- < 1%
- 1% - 2.4%
- 2.5% - 4.9%
- 5% - 7.4%
- 7.5% - 9.9%
- 10% +

2010 Census Tracts

Incorporated Area

King County
Department of
Natural Resources and Parks
Solid Waste Division
April 1, 2014

0 2 4 Miles

Data Source: American Community Survey 2006 - 2010

The information included on this map has been compiled by King County staff from a variety of sources and is subject to change without notice. King County makes no representations or warranties, express or implied, as to accuracy, completeness, timeliness, or rights to the use of such information. This document is not intended for use as a survey product. King County shall not be liable for any general, special, indirect, incidental, or consequential damages including, but not limited to, lost revenues or lost profits resulting from the use or misuse of the information contained on this map. Any sale of this map or information on this map is prohibited except by written permission of King County.

\\dnr1\projects\SWD\working\projects\waste_hauler_service_areas\apps\waste_mngmt_perc_spanish_speaking.mxd

Note: Because the American Community Survey is a small sample, margins of error are high, and these data should be used with caution as a generalization of people who speak Spanish.

