

2018-19 Collection Schedule

REMEMBER!

Place carts at the curb by 6 a.m. on your service day.



- Recycling** is collected on blue weeks on garbage day.
- Holiday Delays:** If collection falls on or after Thanksgiving, Christmas Day (Dec. 25), New Year's Day (Jan. 1), Memorial Day, Labor Day or 4th of July, collection will be one day later that week, including Saturday service for Friday customers.
- Monthly winter yard debris** will be collected the first full week of December–February as indicated on the calendar.
- Weekly yard debris** will resume on the week of Feb 25th, and end on the week of Nov 26th.
- Christmas trees** will be collected during the week of Jan 7th. One (1) extra charge will be applied to non-yard debris subscribers per whole tree. Trees must be cut to sections no longer or wider than four (4) feet.

	S	M	T	W	T	F	S
Jul 18	1	2	3	4	5	6	7
Aug 18	1	2	3	4	5	6	7
Sep 18	1	2	3	4	5	6	7
Oct 18	1	2	3	4	5	6	7
Nov 18	1	2	3	4	5	6	7
Dec 18	1	2	3	4	5	6	7



1-877-466-4668
wmnorthwest.com/spokane
Información en español.

SPOKANE_EVEN_2018-19
♻️ Printed on 100% post-consumer recycled paper

Resources Beyond the Curb

HOUSEHOLD HAZARDOUS WASTE

Hazardous products that say "Caution, Warning, Danger or Poison" on the label are harmful to humans, wildlife and the environment and are not allowed in the garbage.

For proper disposal information, please visit:

Hazardous Waste and Sharps Drop Off

- Valley Transfer Station
3941 North Sullivan, 509-477-6800
- North County Transfer Station
22123 Elk-Chattaroy Rd, 509-477-6800
- Waste-to-Energy Facility
2900 South Geiger Blvd., 509-625-6580
- Spokane Valley University Transfer Station
2405 University Rd, 509-924-5678

Visit www.spokanewastedirectory.org or spokanecountysolidwaste.org for detailed information about what materials are accepted.

Computers, Monitors & TV Recycling (FREE)

- E-Cycle Washington, www.ecyclewashington.org

Fluorescent Bulbs & Tubes, Cell Phones and Batteries

- Waste Management, www.thinkgreenfromhome.com
- Visit www.lightrecycle.org/ for drop off locations

Unwanted Medicines

- Take Back Your Meds, www.takebackyourmeds.org, or check with your local Police Precinct.

OPTIONS FOR PREVENTING WASTE

Questions About Recycling

- recycleinlandnw@wm.com
- Washington Department of Ecology
• 1-800-RECYCLE
• www.1800recycle.wa.gov

RECYCLE OFTEN. RECYCLE RIGHT.

To Learn More Visit RecycleOftenRecycleRight.com

Plastic bottles can turn into clothing

Aluminum cans can turn into new ones in 60 days

Today's news can become a new cereal box

How to Recycle:

Recycle all bottles, cans and paper

Keep items clean and dry

No plastic bags



11321 E. Indiana Road
Spokane Valley, WA 99206-5133
1-877-466-4668 (M-F, 7AM-5PM)
Información en español

Everything has its place.
Recycle right!

Read & use these guidelines.

Recycle Often. Recycle RightSM.

SPOKANE_EVEN_2018-19 ♻️ Printed on post-consumer recycled paper.



THINK GREEN.®

Spokane County Recycling Guide



We're available online at wmnorthwest.com/spokane
Or by phone 1-877-466-4668 • M-F 7-5, Sat 9-1

RECYCLING

Empty and rinse containers out.
Place loose in cart.



Clean paper and cardboard

- Newspaper
- Corrugated Cardboard
- Magazines and Catalogs
- Telephone Books
- Printer Paper
- Junk Mail
- Cereal and Pop Boxes
- Shoe Boxes
- Non-Coated Paper Products



Flatten and cut cardboard to fit into the cart with the lid shut

Clean, empty glass bottles and jars

Labels OK.



Clean plastic

Plastic Bottles.
No caps or lids.



Clean metal

Aluminum and Tin Cans



Recycling Extras

Put extra recyclables in a clearly marked kraft bag, cardboard box, or 32-gallon container with handles and lid. Please label "Recycle".



KEEP OUT OF RECYCLING

- Plastic Bags
- Foam cups, blocks & packing materials
- Food-soiled Items
- Microwave Trays
- Ceramics & Dishes
- Light Bulbs
- Window Glass & Mirrors
- Hazardous Waste Containers
- Syringes
- Lids



- Batteries
- Electronics
- Sharp Metal
- Shredded Paper

YARD AND FOOD DEBRIS

All of these items can go into your yard and food cart.

Food scraps and leftovers

All these items be composted in your yard and food debris cart.



Food-soiled paper

- Paper Towels
- Napkins
- Food-Soiled Paper Bags
- Greasy Pizza Boxes
- Tea Bags, Coffee Grounds and Filters



Yard trimmings

- Leaves, Grass, Plant Trimmings
- Branches and Christmas Trees (*must be undecorated, unflocked, cut into 4 foot lengths and fit in your cart*)



Extra Yard Trimmings

There is a charge for extra yard trimmings. Label cans or paper bags "yard debris" and put them next to your yard debris cart at least 3 feet from garbage. Extra carts are available for a fee.



- Put extra yard trimmings in:
- Cans with handles, marked "yard debris" (32 gal., 65 lb. limit)
 - Bundle extra branches (4x2x2 ft. limit)

KEEP OUT OF YARD & FOOD DEBRIS

- Twine
- Plastic Bags & Containers
- Fats, Oil or Grease
- Glass
- Metal & Foil
- Concrete
- Liquids
- Diapers & Pet Waste
- Garden Hoses
- Dirt, Sod & Rocks

You can subscribe to yard and food debris service at 1-877-466-4668!

GARBAGE

These items are neither recyclable nor compostable. Please put them in your garbage cart.



Non-recyclable plastic

All these items go into your garbage cart.



Non-recyclable glass

- Window Panes, Mirrors
- Ceramics, Dishware, Broken Glass
- Standard Light Bulbs



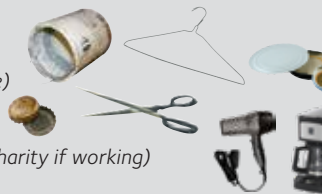
Non-recyclable paper

- Non-Food Soiled Paper Towels
- Shiny, Coated or Foil Paper
- Hardcover Books (*donate to a charity or school*)



Non-recyclable metal

- Latex Paint Cans (*harden paint with kitty litter or paint hardener, then place in garbage*)
- Lids and Caps
- Sharp Metal
- Small Appliances (*donate to a charity if working*)



Garbage Tips and Guidelines

- Please bag all garbage.
- Double bag pet waste, packing pellets, vacuum dust, sawdust, and cold ashes.
- Weight limit: 32-gal/65 lbs for your collector's safety.

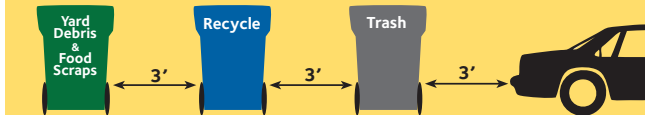


Garbage charges are based on container size. There is a charge for extra garbage that doesn't fit in your container with the lid closed. Bulky items like mattresses, appliances, and building materials can be picked up by special arrangement for a fee. Call Waste Management customer service at 1-877-466-4668 or visit wmnorthwest.com/spokane.

KEEP OUT OF GARBAGE

- Hazardous Waste
- Medical Waste
- Syringes
- Fluorescent Bulbs & Tubes
- CFL Light Bulbs
- Liquids
- Fuel Tanks
- Computers
- TVs

Service Information CONTAINER SET OUT GUIDELINES



Please Allow Adequate Spacing Around Your Carts.

Your recycling cart will be collected every-other week on your garbage collection day.

- Place carts at the curb by 6 a.m.
- Place carts three (3) feet apart with lids opening toward the street.
- Place carts at least three (3) feet from obstructions such as cars, trees, utility boxes, fences and mailboxes. Our trucks need clear access to empty carts.
- Please keep the sidewalks clear for safety.
- Place wheels as close to the curb as possible.

HOLIDAY SCHEDULE

Waste Management provides collection service on all holidays except Thanksgiving, Christmas Day (Dec. 25) New Years Day (Jan. 1), Memorial Day, 4th of July and Labor Day. If any of these holidays fall on or before your regular collection day that week, your scheduled collection will be one day later that week including Saturday. For example, if a holiday falls on a Thursday, Thursday customers will be collected on Friday and Friday customers will be collected on Saturday.

SERVICE DELAYS

Waste Management is able to provide service in most weather conditions.

In an event of extreme inclement weather event, visit www.wmnorthwest.com/weatherboardcw.html to learn about any weather-related service delays.

If weather conditions prevent safe collection, up to twice as much garbage, recyclables and compostables will be collected at no extra charge on your next regular collection day. No credits will be issued for collection delays due to weather.

To learn more about how waste collection is regulated in your area, visit the Washington Utilities and Transportation Commission website at www.utc.wa.gov. The commission website has a useful on-line "Consumer Guide" that answers most frequently asked questions about your garbage service.

To learn how to pay your bills on-line, visit wm.com/pay-my-bill

You can also learn how to manage your account and check your schedule with our WM mobile app at wm.com/wm-mobile.jsp