

RECYCLING GUIDELINES



NO PLASTIC BAGS

CLEAN PAPER, CARDBOARD

(flattened)



CLEAN PLASTIC

BOTTLES, JUGS, TUBS & CUPS (empty, dry & no caps)



CLEAN METAL

SODA & SOUP CANS (empty & dry)



CLEAN GLASS

BOTTLES & JARS (empty, dry & no caps)



No foam, plastic bags, plastic trays, plates, utensils, mirrors, windows, dishes, ceramics, needles, syringes or toxic containers (auto products, pesticides, etc.).

RECYCLING TIPS

- Do not bag, place loose in cart.
- No food or liquids (empty containers).
- Flatten cardboard

There is no charge for extra recycling.

Put extra recycling in kraft bag, cardboard box (maximum size 2' x 3') or 32-gallon can with handles and lid. Please label "Recycle."



Please Post

2020-21 NEWCASTLE COLLECTION SCHEDULE

Please place containers at the curb by 6:00 a.m.

- Two (2) ft apart with lids opening toward street
- At least three (3) ft from cars, trees and mailboxes
- Wheels as close to the curb as possible

Please remove containers as soon as possible after collection.

Recycling collected every other week on garbage day.

Yard/Food Waste is included with your recycling service and is collected weekly.

If collection falls on or after Thanksgiving (Nov 26), Christmas (Dec 25), or New Year (Jan 1), collection is one day later that week only.

	S	M	T	W	T	F	S
Jun '20		1	2	3	4	5	6
	7	8	9	10	11	12	13
	14	15	16	17	18	19	20
	21	22	23	24	25	26	27
	28	29	30	1	2	3	4
Jul '20	5	6	7	8	9	10	11
	12	13	14	15	16	17	18
	19	20	21	22	23	24	25
	26	27	28	29	30	31	1
Aug '20	2	3	4	5	6	7	8
	9	10	11	12	13	14	15
	16	17	18	19	20	21	22
	23	24	25	26	27	28	29
	30	31	1	2	3	4	5
Sep '20	6	7	8	9	10	11	12
	13	14	15	16	17	18	19
	20	21	22	23	24	25	26
	27	28	29	30	1	2	3
Oct '20	4	5	6	7	8	9	10
	11	12	13	14	15	16	17
	18	19	20	21	22	23	24
	25	26	27	28	29	30	31
	1	2	3	4	5	6	7
Nov '20	8	9	10	11	12	13	14
	15	16	17	18	19	20	21
	22	23	24	25	26	27	28
	29	30	1	2	3	4	5
Dec '20	6	7	8	9	10	11	12
	13	14	15	16	17	18	19
	20	21	22	23	24	25	26
	27	28	29	30	31	1	2
Jan '21	3	4	5	6	7	8	9
	10	11	12	13	14	15	16
	17	18	19	20	21	22	23
	24	25	26	27	28	29	30
	31						

	S	M	T	W	T	F	S
Feb '21	1	2	3	4	5	6	
	7	8	9	10	11	12	13
	14	15	16	17	18	19	20
	21	22	23	24	25	26	27
	28	1	2	3	4	5	6
Mar '21	7	8	9	10	11	12	13
	14	15	16	17	18	19	20
	21	22	23	24	25	26	27
	28	29	30	31	1	2	3
Apr '21	4	5	6	7	8	9	10
	11	12	13	14	15	16	17
	18	19	20	21	22	23	24
	25	26	27	28	29	30	1
May '21	2	3	4	5	6	7	8
	9	10	11	12	13	14	15
	16	17	18	19	20	21	22
	23	24	25	26	27	28	29
	30	31	1	2	3	4	5
Jun '21	6	7	8	9	10	11	12
	13	14	15	16	17	18	19
	20	21	22	23	24	25	26
	27	28	29	30	1	2	3
Jul '21	4	5	6	7	8	9	10
	11	12	13	14	15	16	17
	18	19	20	21	22	23	24
	25	26	27	28	29	30	31
Aug '21	1	2	3	4	5	6	7
	8	9	10	11	12	13	14
	15	16	17	18	19	20	21
	22	23	24	25	26	27	28
	29	30	31	1	2	3	4
Sep '21	5	6	7	8	9	10	11
	12	13	14	15	16	17	18
	19	20	21	22	23	24	25
	26	27	28	29	30	26	27
	28	29	30				



wmnorthwest.com/newcastle
1-800-592-9995 (M-F 7AM – 7PM, Sat. 9AM – 1PM)
Información en español. Multi-language materials available

Printed on 100% postconsumer recycled paper

Newcastle_SF_Guide_2020

GARBAGE GUIDELINES

PLEASE BAG ALL GARBAGE

NON-RECYCLABLE PAPER

(shiny coated)



NON-RECYCLABLE PLASTIC



NON-RECYCLABLE METAL



NON-RECYCLABLE GLASS



OTHER GARBAGE



GARBAGE TIPS

- Please bag all garbage.
- Double bag pet waste, packing pellets, vacuum dust, sawdust and cold ashes.
- Please DO NOT put liquids, hazardous waste or recycling in garbage.

There is a charge for extra garbage.

Each garbage unit set out for collection that does not fit in the container with the lid closed and is above the normal service level listed on your utility account will be subject to additional charges. There is a weight limit for extra garbage (32-gal/65lbs) for your collector's safety.



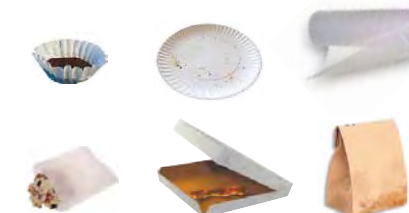
YARD & FOOD WASTE GUIDELINES

NO PLASTIC, GLASS, DIAPERS OR PET WASTE

FOOD SCRAPS



UNCOATED PAPER & ONLY APPROVED COMPOSTABLE PRODUCTS



PLANTS, FLOWERS & YARD DEBRIS



Visit cedar-grove.com for approved compostable products.

TIP: Cut branches into 4' sections no wider than 4" in diameter. No candles, decorations, twine or wire.

YARD & FOOD WASTE TIPS

Remember, yard waste is now included in your garbage rate for all residential customers

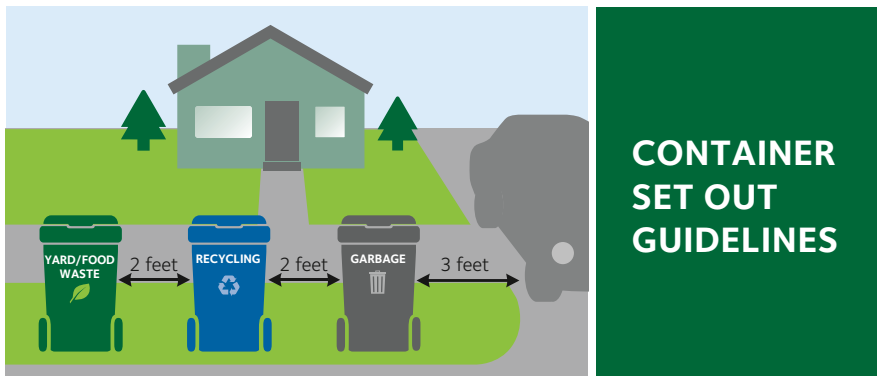
- Collect food scraps and leftovers in a:
 - Paper grocery bag
 - Reusable plastic, metal, glass or ceramic container with lid
 - Approved compostable bag

Extra Yard Trimmings

There is a charge for extra yard trimmings. Put extra trimmings (no food waste) in:

- Cans with handles (32 gal., 65 lb. limit)
 - Label can "Yard"
 - Put next to yard cart at least 3 ft. from garbage.
- Reusable polywoven or paper yard bags
- Bundles (4x2x2 ft. limit)





CONTAINER SET OUT GUIDELINES

Garbage charges are based on container size. Recycling and yard waste are included in your garbage rate.

Visit wmnorthwest.com/newcastle or call **1-800-592-9995** for:

- **Collection rate or service subscription**
- **Bulky item collection** (*mattresses, appliances, etc.*)
- **Construction/demolition containers** (*remodeling, etc.*)
- **Disabled service**
- **Vacation hold service** (*advance notice only*)
- **Missed collection or missing/damaged carts**

Beyond the Bin

Some items such as medical wastes, fluorescent bulbs and tubes, needles, fuel tanks, electronics and chemicals are hazardous and are not allowed in garbage or recycling.

- **Electronics & Fluorescents:** 
lightrecycle.org
kingcounty.gov/takeitback
- **Free TV, Computer & Monitor Recycling:** 
EcycleWashington.org, 1-800-RECYCLE
- **Hazardous Waste:** 206-296-4692, hazwastehelp.org
- **Hazardous Waste Drop-off Service**
 Factoria Transfer Station - 13800 SE 32nd St Bellevue, WA 98005
kingcounty.gov (*search Factoria transfer station*)
- **Latex paint:** kingcounty.gov/takeitback or greensheepaint.com
- **Sharps Disposal:** thinkgreenfromhome.com 
- **Styrofoam:** www.StryroRecycle.com

What Do I Do With...? kingcounty.gov/whatdoidowith

How to Recycle Right

Everything you put in your recycling cart should be:



CLEAN
Give food containers a quick rinse.



EMPTY
Ensure items are empty and dry from liquids.






LOOSE
Keep recyclables out of bags and boxes.



Have plastic bags to recycle? Many grocery stores accept used plastic bags for recycling. Contact your local store or visit plasticfilmrecycling.org for more information!

Reduce, Reuse, then Recycle

Waste prevention is our biggest opportunity to reduce our consumption of natural resources.

- **PREVENT FOOD WASTE – BUY ONLY WHAT YOU NEED**
 When grocery shopping, be thoughtful. Make a list and buy only what you need to minimize any food waste.
- **SHARE, SWAP OR SELL!**
 Instead of buying items you will use infrequently, consider borrowing or renting. Borrow from a neighbor or join a local Nextdoor or Buynothing group.
- **CHOOSE TO REUSE**
 Use reusable mugs, water bottles, utensils and bags. Store an extra in your car or at your desk so you will always be prepared.

For more information visit: kingcounty.gov/waste-prevention

WM Mobile App
 Use the WM app to manage your account and check your collection schedule on the go. Available in Apple and Android:
wm.com/wm-mobile

Billing Information
 You may pay your bill online at www.wm.com or sign up for paperless billing at no cost. Watch for more information when you receive your customer ID number on your WM invoice.

Inclement Weather Information

Weather delay? During inclement weather, visit the Newcastle service alert page for service information: wmnorthwest.com/Newcastle


PPSRT STD
 U.S. POSTAGE
PAID
 SEATTLE, WA
 PERMIT NO. 963



720 4th Ave, Suite 400
 Kirkland, WA 98033

1-800-592-9995 (M-F 7AM - 7PM, Sat. 9AM - 1PM)
wmnorthwest.com/newcastle
 Online Billing: wm.com/pay-my-bill

Waste Management is pleased to provide these guidelines to help make it easier to use our services. Please read and save these guidelines for future reference.

Newcastle_SF_Guide_2020  Printed on 100% post consumer recycled paper

YOUR 2020 NEWCASTLE RECYCLING & COLLECTION GUIDE

