

# City of Darrington 2017-18 Collection Schedule

Please Post

**Please place containers at the curb by 6:00 a.m.**

- Two (2) feet apart with lids opening toward street
- At least three (3) feet from cars, trees, mailboxes
- Wheels as close to the curb as possible

Please remove containers as soon as possible after collection.

**♻️ Recycling** is collected every other week.

**Garbage** is collected weekly from subscribers. Subscribe online or call **1-800-592-9995**.

**Holidays.** Service will be picked up on all holidays except Thanksgiving (Nov 23), Christmas (Dec 25), and New Years. If service is on one of those days, it will be one day later (Friday customers will be picked up on Saturday).

	S	M	T	W	T	F	S
Aug 17			1	2	3	4	5
	♻️ 6	7	8	9	10	11	12
	13	14	15	16	17	18	19
	♻️ 20	21	22	23	24	25	26
	27	28	29	30	31	1	2
Sep 17	♻️ 3	4	5	6	7	8	9
	10	11	12	13	14	15	16
	♻️ 17	18	19	20	21	22	23
	24	25	26	27	28	29	30
Oct 17	♻️ 1	2	3	4	5	6	7
	8	9	10	11	12	13	14
	♻️ 15	16	17	18	19	20	21
	22	23	24	25	26	27	28
	♻️ 29	30	31	1	2	3	4
Nov 17	5	6	7	8	9	10	11
	♻️ 12	13	14	15	16	17	18
	19	20	21	22	★ 24	25	
	♻️ 26	27	28	29	30	1	2
Dec 17	3	4	5	6	7	8	9
	♻️ 10	11	12	13	14	15	16
	17	18	19	20	21	22	23
	♻️ 24	★ 26	27	28	29	30	
	♻️ 31	★	2	3	4	5	6
Jan 18	♻️ 7	8	9	10	11	12	13
	14	15	16	17	18	19	20
	♻️ 21	22	23	24	25	26	27
	28	29	30	31			

	S	M	T	W	T	F	S
Feb 18					1	2	3
	♻️ 4	5	6	7	8	9	10
	11	12	13	14	15	16	17
	♻️ 18	19	20	21	22	23	24
	25	26	27	28	1	2	3
Mar 18	♻️ 4	5	6	7	8	9	10
	11	12	13	14	15	16	17
	♻️ 18	19	20	21	22	23	24
	25	26	27	28	29	30	31
Apr 18	♻️ 1	2	3	4	5	6	7
	8	9	10	11	12	13	14
	♻️ 15	16	17	18	19	20	21
	22	23	24	25	26	27	28
	♻️ 29	30	1	2	3	4	5
May 18	6	7	8	9	10	11	12
	♻️ 13	14	15	16	17	18	19
	20	21	22	23	24	25	26
	♻️ 27	28	29	30	31	1	2
Jun 18	3	4	5	6	7	8	9
	♻️ 10	11	12	13	14	15	16
	17	18	19	20	21	22	23
	♻️ 24	25	26	27	28	29	30
Jul 18	1	2	3	4	5	6	7
	♻️ 8	9	10	11	12	13	14
	15	16	17	18	19	20	21
	♻️ 22	23	24	25	26	27	28
	29	30	31	1	2	3	4
	♻️ 5	6	7	8	9	10	11
Aug 18	12	13	14	15	16	17	18
	♻️ 19	20	21	22	23	24	25
	26	27	28	29	30	31	



720 4th Ave., Suite 400  
Kirkland, WA 98033

**1-800-592-9995**

Monday-Friday 7 a.m.-7 p.m.

Saturday 9 a.m.-1 p.m.

Translation service available.

[www.wmnorthwest.com](http://www.wmnorthwest.com)

Información en Español.

Online Billing: [www.wm.com/pay-my-bill](http://www.wm.com/pay-my-bill)

**Reduce, Reuse and then Recycle**

Most of an item's carbon footprint is from producing and using it — only a small percentage in disposing of it.

**Before you buy, use or discard an item, ask yourself:**

- Reduce: Can I buy this item used or with less packaging?
- Reuse: Can I, or someone else, use this item again?
- Recycle: Can I recycle this item after I use it?
- Buy Recycled: Can I buy this item with recycled content?

# DARRINGTON RECYCLING GUIDE



Waste Management is pleased to provide these guidelines to help make it easier to use our services. Visit our website [www.wmnorthwest.com/darrington](http://www.wmnorthwest.com/darrington) for more tips on how to Think Green.

1-800-592-9995  
Monday-Friday 7 a.m.-7 p.m.  
Saturday 9 a.m.-1 p.m.



[wmnorthwest.com/darrington](http://wmnorthwest.com/darrington)  
Información en español.  
**1-800-592-9995**  
M-F 7 a.m.-7 p.m.  
Sat. 9 a.m.-1 p.m.  
Translation service available.

♻️ 100% post-consumer recycled paper

#940DARCAL2017-1BRD\_NEW

#940DARCAL2017-1BRD\_NEW ♻️ Printed on 100 percent post-consumer recycled paper

## GARBAGE

These items are neither recyclable or compostable. Please put them in the gray garbage cart.

### Non-recyclable plastic

Foam take-out containers, foam cups or packing peanuts, plastic utensils, prescription vials, diapers, motor oil containers, garden hoses, snack bag wrappers, bows, etc.



### Non-recyclable glass

Window panes, mirrors, ceramics, dishware, light bulbs, broken glass, etc.



### Non-recyclable paper

Paper towels, napkins, wrapping paper, etc.



### Non-recyclable metal

Paint cans, lids, caps, sharp metal objects, plastic appliances, etc.



Latex paint is not accepted at hazardous waste facilities.

Use kitty litter or paint hardener to solidify latex paint. Once dry and hardened, please dispose of latex paint in your garbage container.

Donate books to a local charity or school.

Alkaline batteries are accepted at local hazardous waste facilities. Better yet, use rechargeable batteries instead.

## KEEP OUT OF GARBAGE

Hazardous Waste  
Medical Waste  
Syringes

Fluorescent Bulbs  
or Tubes  
Liquids

Fuel Tanks  
Computers  
or TVs

### Garbage Tips:

- Please bag all garbage.
- Double bag pet waste, packing pellets, vacuum dust, sawdust, and cold ashes.
- Weight limit: 32-gal/65 lbs for your collector's safety.
- Garbage charges are based on container size. There is a charge for extra garbage that doesn't fit in your container with the lid closed.

## RECYCLING

Do not bag or box recyclables. Clean & empty items only.

### Clean paper and cardboard

Flattened cardboard (limit 2x3 ft), newspapers, inserts, magazines, catalogs, phonebooks, paperback books, mail (window envelopes OK), paper bags, and food boxes.



### Paper food containers

Clean paper cups, milk and juice cartons, juice boxes, and frozen food boxes. (rinse clean, no caps)



### Clean glass bottles and jars

All colors and sizes. (no caps or lids; labels OK)



### Clean metal

Aluminum and tin cans, empty aerosol cans, scrap metal and small metal appliances (limit 2x2x2 ft, 35 lbs). Please rinse and empty cans.



### Clean plastic containers

Plastic bottles, cups, jars, jugs, and tubs.



## KEEP OUT OF RECYCLING

No Foam Cups  
& Packaging  
Yard/Food Waste  
Light Bulbs or  
Fluorescent tubes

Hazardous Waste  
Medical Waste  
Syringes  
Batteries  
Sharp Metal

Liquids  
Fuel Tanks  
Computers or TVs  
Broken Dishes, Ceramics  
or Window Glass

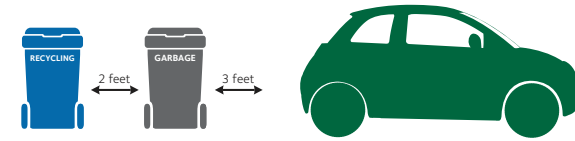
### Recycling Tips:

- Empty clean recyclables out of bags and boxes into the cart so that they can be easily sorted.
- Put all recyclables in your blue recycling cart.
- Blue recycling carts are emptied every other week.
- Put extra recycling in 32-gallon containers with handles and lids. Label "Recycle".\*

\*There is no charge for extra recycling



## COLLECTION GUIDELINES



You can order recycling and garbage carts at [wmnorthwest.com/darrington](http://wmnorthwest.com/darrington) or 1-800-592-9995.

### Garbage

Charges are based on container size. There is a charge for extra garbage that doesn't fit in your cart with the lid closed. See [wmnorthwest.com/darrington](http://wmnorthwest.com/darrington) for rates.

- Weight limit 32 gal/65 lbs
- Bag garbage
- Double bag pet litter, packing peanuts and cool ashes

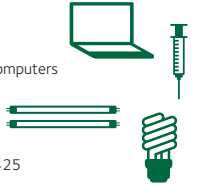
Visit [wmnorthwest.com/darrington](http://wmnorthwest.com/darrington) or call 1-800-592-9995 for:

- Collection rates or service subscription
- Construction/demolition containers (remodeling, etc.)
- Disabled service
- Vacation service hold (advance notice only)

### Hazardous and medical wastes

Fluorescent bulbs and tubes, needles, liquids, fuel tanks, computers and TVs are not allowed in garbage or recycling.

- Free TV, Computer and Monitor Recycling  
[EcycleWashington.org](http://EcycleWashington.org) | 1-800-RECYCLE
- Electronics and Fluorescents  
[lampracker.com](http://lampracker.com) | [takeitbacknetwork.org](http://takeitbacknetwork.org) | 425-388-3425
- Household Hazardous Waste Disposal  
3434 McDougall Ave, Everett | 425-388-6050 | [www.snoco.org/solidwaste](http://www.snoco.org/solidwaste)
- Sharps Disposal  
[thinkgreenfromhome.com](http://thinkgreenfromhome.com)



### Missed Collection or Missing/Damaged Carts:

- Call 1-800-592-9995 Monday – Friday 7 a.m. – 7 p.m., Saturday 9 a.m. – 1 p.m.
- Report online at [wmnorthwest.com/darrington](http://wmnorthwest.com/darrington)

**Weather delay?** If weather conditions prevent safe collection a double load of garbage or recycling will be collected at no extra charge on your next regular collection day. Updates: [wmnorthwest.com/weatherboard](http://wmnorthwest.com/weatherboard)  
No credits will be issued for collection delays caused by weather.